



Peplink Presentation

Subtitle or Date

Who We Are



Company History

- Founded in **2006**
- Over **30+ granted patents** regarding our SpeedFusion SD-WAN technology
- **Comprehensive WLAN Solutions** for any deployment

Global Brand

- Over **500+ Partners/Resellers** in roughly **70 countries**
- Satisfied global customers



Small, Passionate Team

- **127-person** team
- **81** Dedicated R&D Engineers

Direct Communication

- **[Forum.peplink.com](https://forum.peplink.com)**
- Have direct communication with partners and end-users
- Dynamic and passionate team members stand ready

Recognized by Gartner

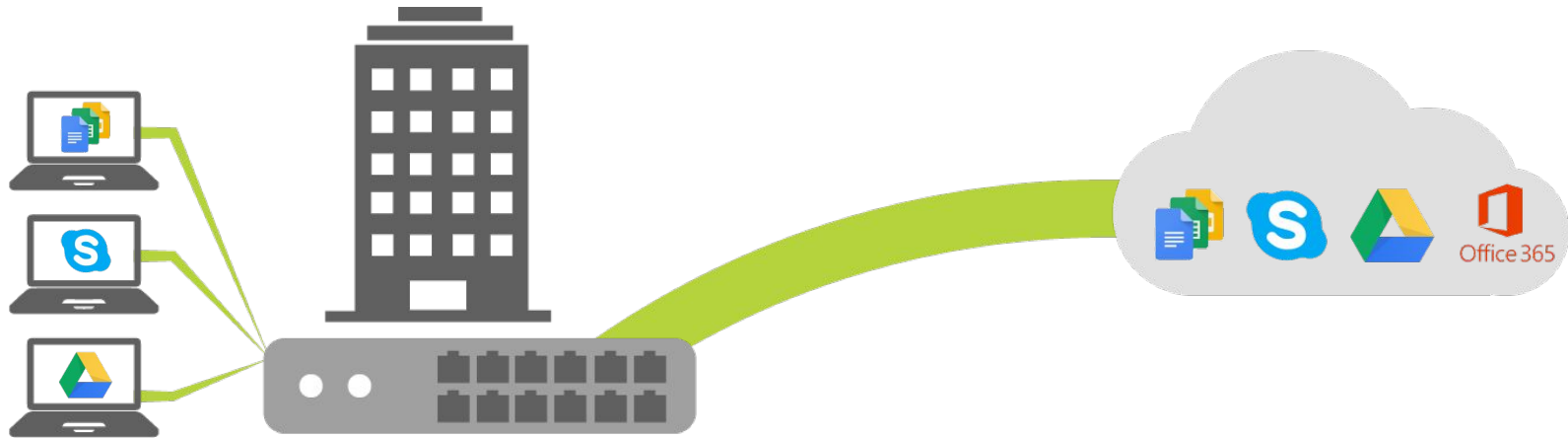


Gartner's report shines a light on the brightest and most capable companies, and Peplink's expertise has earned us a spot on this prestigious report.



Peplink Advantages

Unbreakable Connectivity

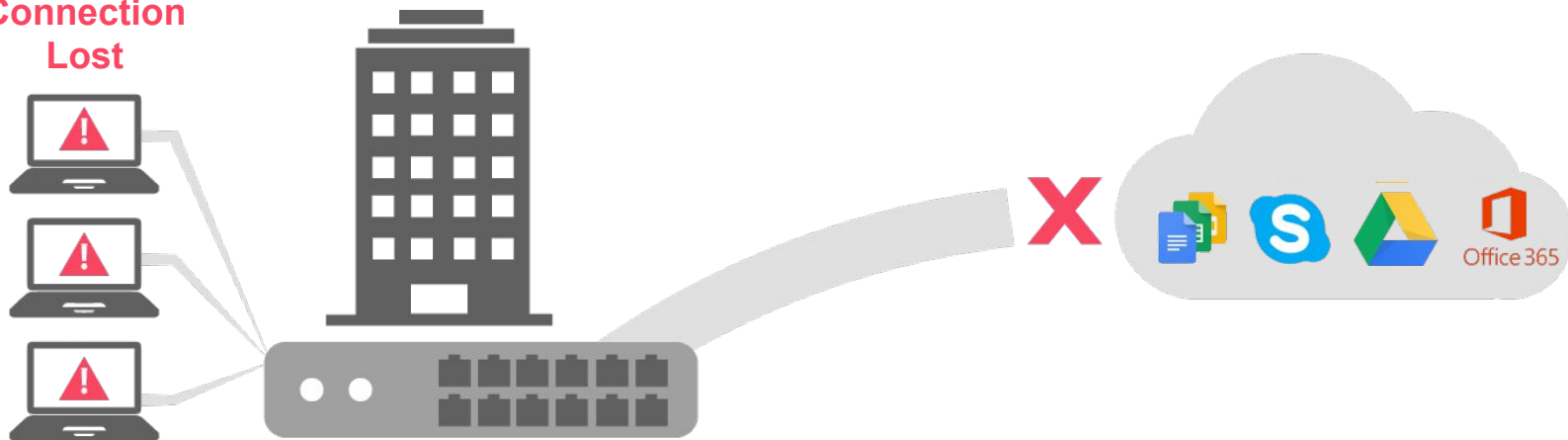


Your cloud apps require constant connectivity.

Unbreakable Connectivity

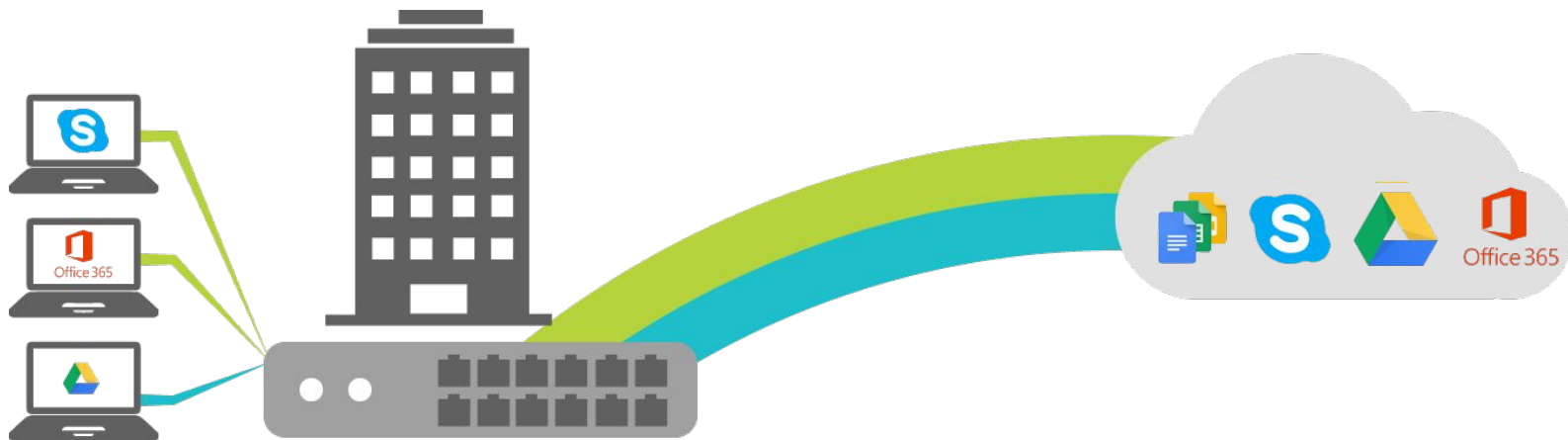


Connection
Lost



If you connection goes down, your office stops working.

Unbreakable Connectivity

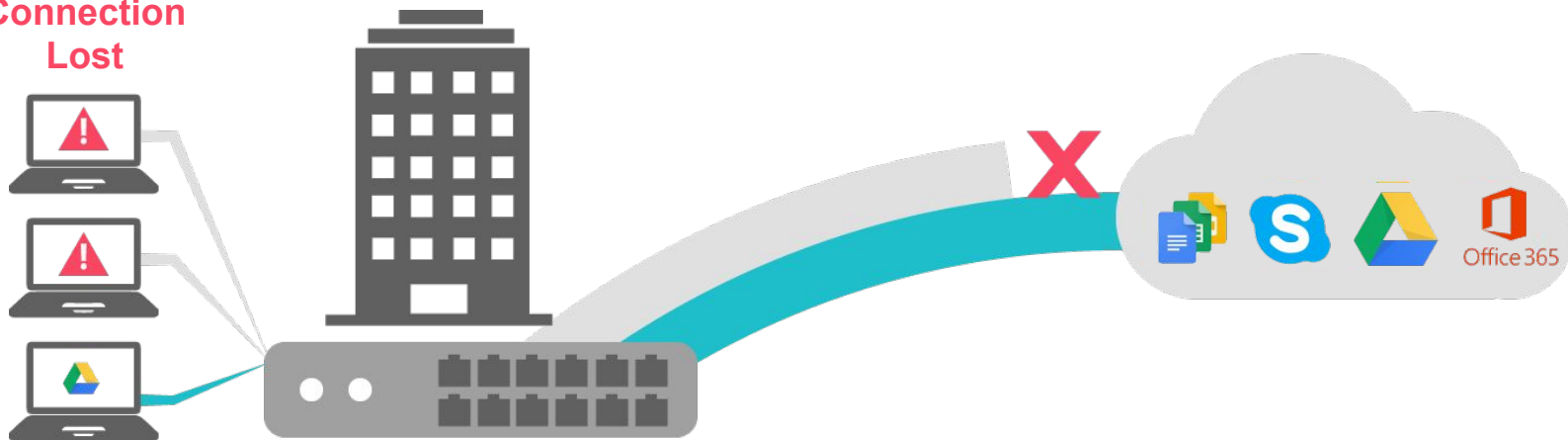


Even if you connect multiple WAN lines...

Unbreakable Connectivity



Connection
Lost



...a lost connection will lead to a broken session.

Unbreakable Connectivity



Enter **SpeedFusion SD-WAN**.
Combine multiple connections into a single VPN tunnel.

Unbreakable Connectivity



No Effect



Even if a line goes down, your office remains unaffected.

Affordable Connectivity



250Mbps: \$1460 / Month

For 99.999% reliability, many organizations go for costly leased lines.

Affordable Connectivity



250Mbps Private Line:
\$1460 / Month



3x 100Gbps ADSL:
\$120 / Month



VS

With SpeedFusion SD-WAN, you can combine multiple commodity links,
saving up to 90% of network costs.

Affordable Connectivity



Private Line: 99.999%

vs

DSL: 98%

DSL: 98%

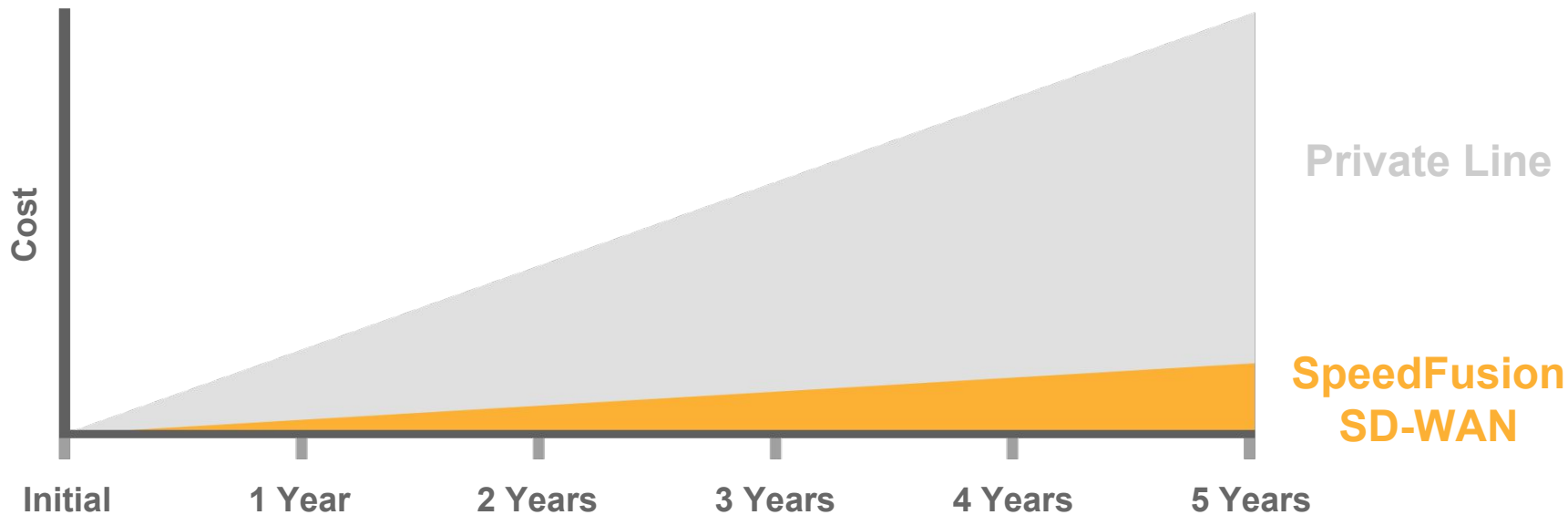
DSL: 98%



99.999%

99.999% reliability is achieved through bandwidth bonding.

Affordable Connectivity



Over time, those cost savings can add up!

Sample Clients



Integrated Logistics | Supply Chain Solutions

50%
Saved



92%
Saved



85%
Saved



67%
Saved



MAX Mobile Family

MAX Mobile Family - Overview



SIM Failover

Each Cell Modem has **redundant SIM slots** to ensure coverage on data caps, signal coverage.

IP67 Enclosure

Made from **aircraft-grade aluminium** and can withstand extreme weather



InControl 2

Monitor, Manage and Configure your Peplink gear from the Cloud with **InControl 2**

SpeedFusion

SpeedFusion capable to ensure connectivity, uptime, aggregation, etc

MAX Mobile Family: Groups



USB Focused:

USB WAN for compatibility, Wi-Fi AP built in

- Up to 4x USB WAN possible
- Over 250+ USB modems supported
 - [MAX On-the-Go and MAX 700](#)

Transportation Hotspot:

Makes fast, reliable internet for passengers

- Up to 2x LTE-A cell modems available
- Simultaneous Dual Band Wi-Fi AP
 - [MAX Transit and MAX Transit Duo](#)

Business Ready/BR Series:

Small form factor and wide power range for easy integration

- 1x Cell module with redundant SIM
- LTE-A versions available
 - [BR1, BR1 ENT, BR1 Slim, BR1 Mini, BR1 M2M, BR1 Pro, BR1 IP55, BR1 IP67](#)

Heavy Duty/HD Series:

Multi cell modem means horsepower for your network

- 2x Cell module with redundant SIM
- LTE-A versions available
 - [HD2 Mini, HD2, HD4, HD2 IP67, HD4 IP67](#)

MAX Mobile: BR/Business Ready



BR1

Offers redundant SIM slots with automatic switching, multiple power options, GPS fleet tracking, and remote management, all packed into a durable metal enclosure

- 1x embedded Cell Modem (LTE-A ver available)
- Rugged, Shock/Vibration resistant
- 100Mb Bi-Directional throughput



BR1 Pro

The MAX BR1 Pro comes with 4-port LAN switch and automatic failover, making it an ideal choice for deployments that demand outstanding reliability and flexibility

- Built in 4-port LAN Switch
- 1x embedded Cell Modem (LTE-A ver available)
- 120Mb Bi-Directional throughput



BR1 Ent

The MAX BR1 ENT delivers blazing speeds with automatic failover to LTE and comes without Wi-Fi, making it an ideal choice for deployments that demand security

- No built in Wi-Fi for Security Hardened networks
- PoE Output capable (with optional PoE kit add-on)
- 300Mb Bi-Directional throughput



BR1 Mini

Affordable, Industrial Grade LTE router that's perfect for M2M, Digital Signage, Kiosks and more! A small footprint and a variety of pwr options makes it easy to integrate

- Optional add on for M2M/Out of Band Mgmt support
- Eth and Wi-Fi as WAN as Optional Add-On
- 100Mb Bi-Directional throughput



BR1 Slim

Offering GPS fleet tracking, terminal block power capability, and full IC2 integration, The BR1 Slim is compact and tough enough for any deployment.

- Dual Micro USB Pwr Input
- 10000mAh power bank = up to 7hrs of use
- 100Mb Bi-Directional throughput



BR1 M2M

The MAX BR1 M2M is a rugged, compact router specialized for M2M, featuring a 9-pin serial connector for easy and durable M2M connectivity.

- Built in 9-pin Serial port for M2M usage
- Din-Rail Mountable
- 120Mb Bi-Directional throughput



MAX Mobile: HD/Heavy Duty



MAX Mobile HD2

The **MAX HD2** gives you blazing fast connectivity on the road with dual embedded cellular modems and SpeedFusion bandwidth bonding, plus a built-in 4-port GE switch to reduce clutter in your mobile deployments.

- Terminal Block perfect for vehicle install
- PoE Output capable (with optional PoE kit add-on)
- LTE-A ver available
- 400Mbps throughput



MAX Mobile HD4

The **MAX HD4** delivers outstanding performance from all your connections with the help of SpeedFusion bandwidth bonding and intelligent load balancing.

- 4x embedded LTE Cell modems
 - LTE-A ver available
- Up to 8x PoE output LAN ports
 - PoE Output (optional/add-on)
- 400Mbps throughput



MAX Mobile HD2 Mini

The **MAX HD2 Mini** packs big features, such as dual embedded cellular, SpeedFusion bandwidth bonding, and PoE, into a tough, compact enclosure that stands up to life on the go.

- No built in Wi-Fi for Security Hardened networks
- PoE Output capable (with optional PoE kit add-on)
- 300Mb Bi-Directional throughput

MAX Mobile: Transportation



Pepwave MAX Transit

With a compact form factor, simultaneous dual-band 11ac Wi-Fi, and reliable cellular connectivity, the MAX Transit is ready to deliver fast, reliable Wi-Fi hotspots to your passengers.

- Simultaneous Dual Band 11ac Wi-Fi
- DIN Mount kit makes install easy
- Built in GPS capabilities
- 1x LTE Cellular Modem
 - LTE-A version available



Pepwave MAX Transit Duo

With a compact form factor, simultaneous dual-band 11ac Wi-Fi, and reliable cellular connectivity, the MAX Transit is ready to deliver fast, reliable Wi-Fi hotspots to your passengers.

- Dual Embedded Cellular Modems
 - LTE-A version available
- Simultaneous Dual Band 11ac Wi-Fi
- DIN Mount kit makes install easy
- Built in GPS capabilities

MAX Mobile: USB Focused



Pepwave MAX On The Go

The MAX On-The-Go is compact and lightweight, and it supports more than 250 USB cellular modems, giving you maximum portability, wide compatibility, and high performance that goes wherever you go.

- InControl 2 manageable
- Built in 11a/b/g/n Wi-Fi AP
- 100Mbps throughput
- Small and lightweight enclosure



Pepwave MAX 700

The MAX 700 supports quad USB modems and SpeedFusion for fast, reliable connectivity anywhere, plus it includes a built-in 4-port GE switch to reduce clutter in your mobile deployments.

- InControl 2 manageable
- Built in 11ac Wi-Fi AP
- 400Mbps throughput
- PoE output with add-on

MAX Mobile: Outdoor Series



BR1 IP55

The BR1 IP55 offers embedded MIMO directional and Omni antennas configurable on the fly, plus built-in PoE output, all in a durable and waterproof enclosure.

- PoE Output support with optional add-on
- Software selectable Omni or Directional Wi-Fi antennas
- 100Mbps throughput



BR1 IP67

With an embedded cellular modem in a tough IP67 enclosure, the BR1 IP67 is the most accessible of our IP67 rated cellular family.

- IP67 enclosure = ultimate protection!
- PoE Input simplifies wiring
- Deploy where cell signal is best/no extra antennas!
- 100Mbps throughput



HD2 IP67

The HD2 IP67 offers dual embedded cellular modems and PoE support, encased in a shock and vibration certified, waterproof enclosure.

- IP67 enclosure = ultimate protection!
- PoE Input simplifies wiring
- Dual modem w/redundant SIM
- 400Mbps throughput



HD4 IP67

The HD4 IP67 offers quad embedded cellular modems and PoE support, encased in a shock and vibration certified, waterproof enclosure.

- IP67 enclosure = ultimate protection!
- PoE Output simplifies wiring
- 4x Cell Modems w/redundant SIM
- 400Mbps throughput



Peplink Balance Family

Balance Family Features



Ethernet focused / Multi-WAN

- 2-13 **Ethernet** WAN
- **USB** cnx for Cellular



Set it and Forget it

- **Simple Web UI** for easy configuration
- **Setup** *Traffic Steering rules, Speedfusion, Firewall policies* and more, **quickly and easily**.
- **Enterprise** grade and **rugged**

InControl 2

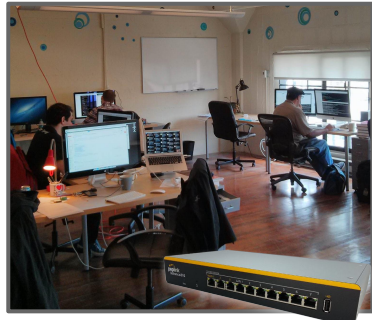
- **Zero-Touch Configuration, Monitoring, and Management from the Cloud**
- **Companion Smart Device app** keeps you connected

Balance Family Groups



Power User

Whether working or playing, the power user looks for consistency and bandwidth at a competitive price



Small Office

Small offices, remote sites that are not able to get consistent uptime from consumer grade connections



Large Office

Headquarters locations/Large Offices demand extreme bandwidth and network connectivity that affects the bottom line.



Datacenter

Extreme Bandwidth and connectivity to keep business connected to corporate Cloud resources.

Peplink Balance Models



Balance 20

- Up to 60x users
- 150Mb bi-directional throughput
- Optional 3rd WAN with additional purchase/unlock



Balance 30 LTE

- 200Mb bi-directional throughput
- 1x Embedded cell modem
 - LTE-A versions available



Balance One

- 600Mb bi-directional throughput
- Versions with built-in 11ac Wi-Fi AP
- Optional 3x LAN to WAN conversion (pur/unlock)



Balance 210

- Up to 150x users
- 350Mb bi-directional throughput
- Optional 3rd WAN with additional purchase/unlock



Balance 305

- 1Gb bi-directional throughput
- 2x Full SpeedFusion Peers supported
 - Upgrade to 20x (purchase/unlock)

Peplink Balance Models



Balance 380

- Up to 500x users
- 1Gb bi-directional throughput
- Drop-in Mode functionality



Balance 580

- Up to 1000x users
- 1.5Gb bi-directional throughput
- Drop-in Mode functionality



Balance 710

- 2.5Gb bi-directional throughput
- One Box Solution
 - Firewall, SpeedFusion, Content Filter, etc.



Balance 1350

- Up to 2000x users
- 5Gb bi-directional throughput
 - 800Mb SpeedFusion throughput



Balance 2500

- Over 20,000+ Users supported
- 8Gb bi-directional throughput
- Version with 2x 10G SFP+ LAN ports.



Peplink Fusionhub

FusionHub: Features



Peplink's Virtual SD-WAN appliance

- Deploy Globally in Minutes
- Control your infrastructure
- Eliminate reliance on physical sites

Fully Featured UI

- Split Tunneling/Outbound Policy capable
- Use Public IP to build Tunnel and Port Forwarding

Easy to Integrate

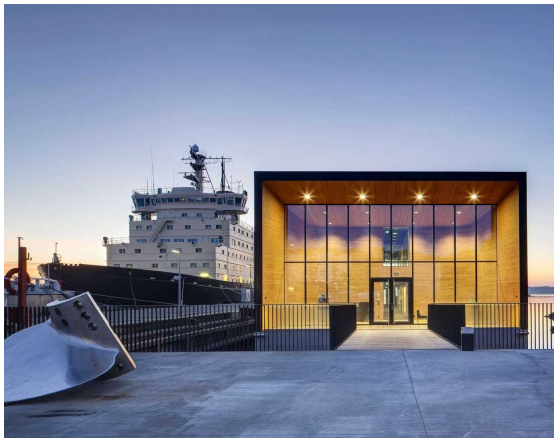
- Variety of FusionHub Instances/sizes available
- Demo version available on site
- Can install on VMware and Cloud Platforms



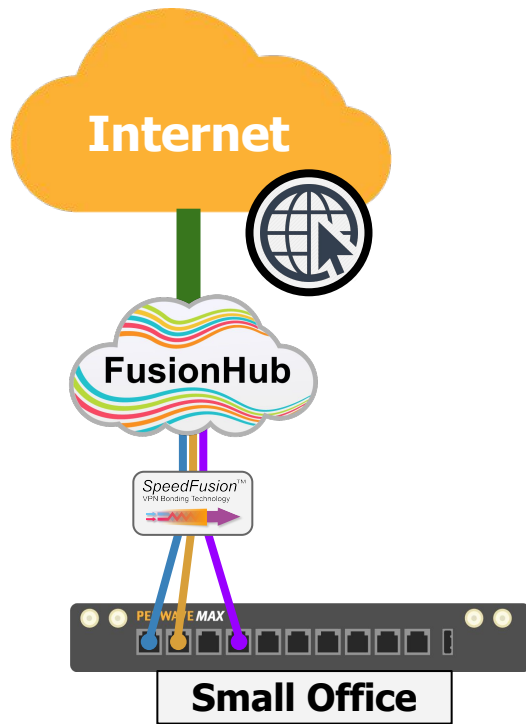
FusionHub SOLO

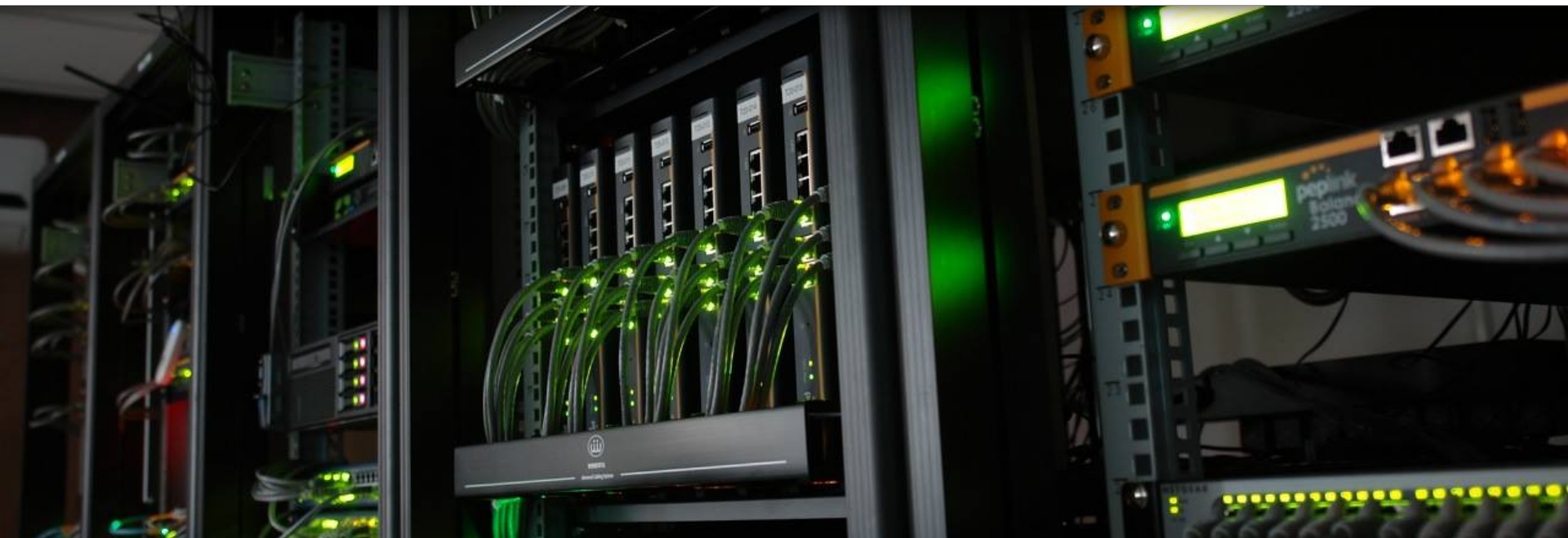
SpeedFusion Connectivity for Small/Remote offices

NEW
peplink



- Bring the **Power of SpeedFusion** to small office networks!
 - **1x peer** connection
 - **100mb** throughput
 - Cost: **FREE!**





Pepwave AP Family

Pepwave AP Characteristics



Powerful

11ac means greater throughput!

InControl 2

**Centrally managed
by InControl 2**



Flexible

**Variety of form factors
both Indoor and Outdoor**

Pepwave Wi-Fi: Enterprise Class



AP One AC Mini
World's Smallest
11ac AP!

- PoE Input
- 2x2 MIMO 2.4 and 5GHz simultaneous dual band Wi-Fi
- InControl 2 integration



AP One Enterprise
Ceiling-Mountable
11ac AP

- 3x3 MIMO, 2.4 and 5GHz simultaneous Dual Band Wi-Fi
- PoE Input
- InControl 2 integration



AP One Rugged
Rugged and Tough
11ac AP

- 3x3 MIMO, 2.4 and 5GHz simultaneous Dual Band Wi-Fi
- Up to 16x concurrent SSIDs
- InControl 2 integration



AP One In-Wall
Wall-Mountable
w/Built in LAN

- Plenum rated/Fire resistant
- Install direct to Electrical Gang Box
- Built-in 4pt LAN
- InControl 2 integration



AP One Flex
Outdoor IP55 rated
AP

- Integrated Omni/Directional antenna (software selectable)
- Perfect for outdoor locations
- InControl 2 integration

Pepwave Wi-Fi: AP Pro



AP Pro 300M

- Software selectable 2x2 MIMO Dual Band
 - 11a/b/g/n
 - 300Mb throughput
- Up to 60x users supported
- IP67 enclosure = ultimate protection



AP Pro Duo

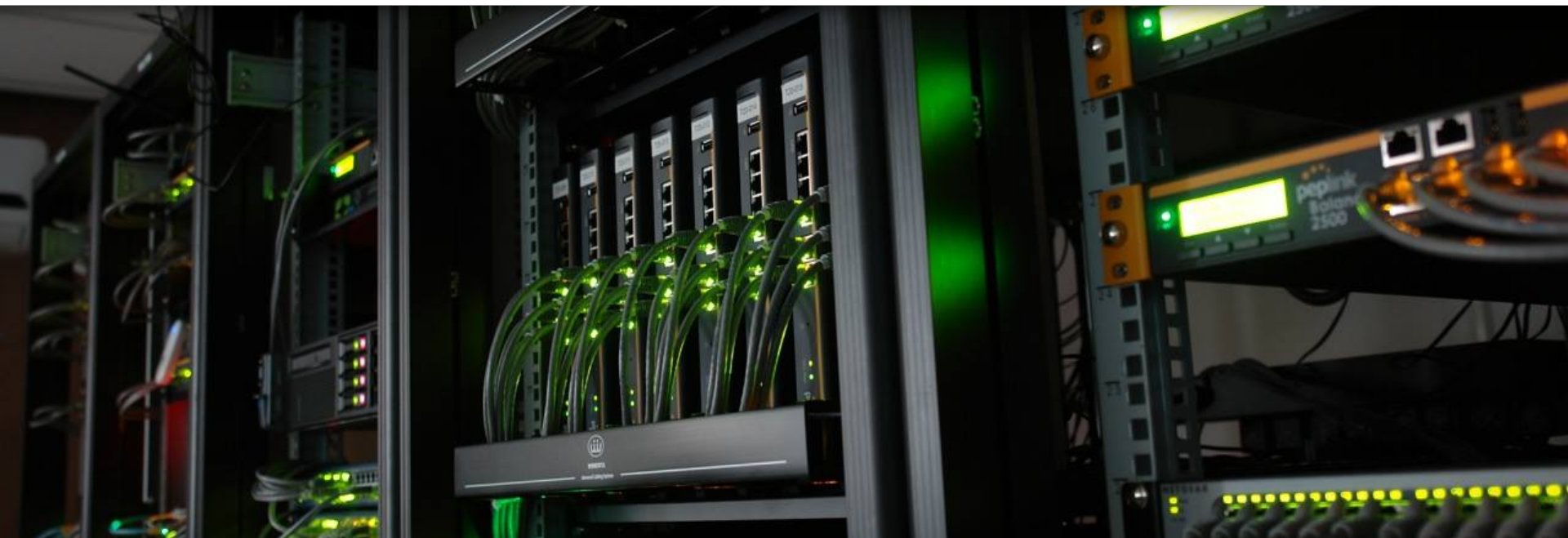
- Simultaneous Dual Band Concurrent 2x2 MIMO
 - 11a/b/g/n
 - 600Mb throughput
- Up to 60x users supported
- IP67 enclosure = ultimate protection



NEW

AP Pro AC

- Simultaneous Dual Band Concurrent 3x3 MIMO
 - 11a/b/g/n
 - 1.3Gb throughput
- Up to 60x users supported
- IP67 enclosure = ultimate protection



Pepwave Device Connectors

Device Connector Characteristics



Universal L2 Transparent Wi-Fi Bridge

- Transparently extend a network SSID without adding a IP
- Compatible with any AP with no re-config necessary

Flexible and Tough

Variety of Form Factors available

- Both indoor and outdoor versions available



SpeedFusion

Combine both 2.5 and 5 GHz signal with **SpeedFusion** to strengthen network Wi-Fi

Device Connector Models



Device Connector Rugged
Ruggedized Metal Enclosure

- **802.11ac 3x3 MIMO**
 - Simultaneous Dual Band
- **2x Gb LAN ports**
- **CarFi Fast Roaming gives seamless hopping between APs**
 - Great for Vehicle Deployments



Device Connector IP55
Outdoor Ready

- **802.11ac 2x2 MIMO**
 - Simultaneous Dual Band
- **Software selectable built in antenna**
 - Change between Omni or Directional
- **PoE Output capable**
 - Optional Purchase/Add-On
- **3x Gb LAN Switch**

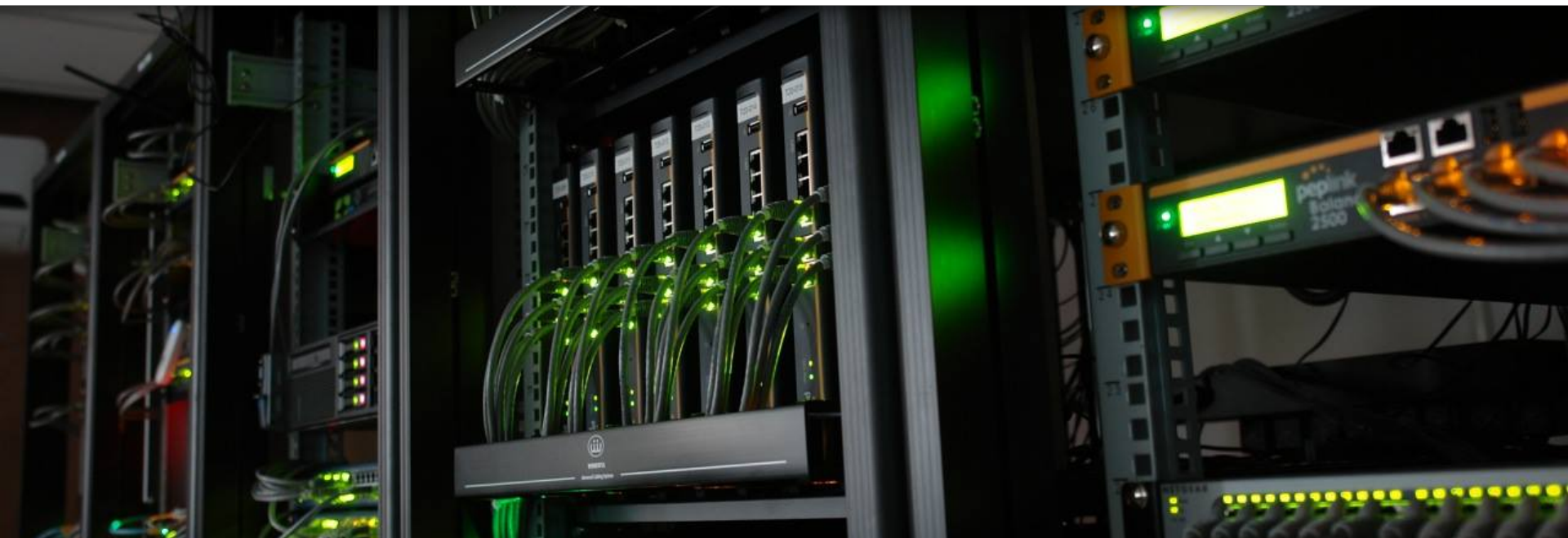
SURF SOHO

Enterprise-grade router for Power Users



- **Multi-WAN Router (for failover)**
 - Ethernet, Wi-Fi, USB Cellular as WAN
 - Ensures uptime during WAN failure
- **Remote VPN Connectivity**
 - L2TP/IPsec/PepVPN
- **InControl 2 integration for Management**





Pepwave Wi-Fi value add - Ad Delivery Service

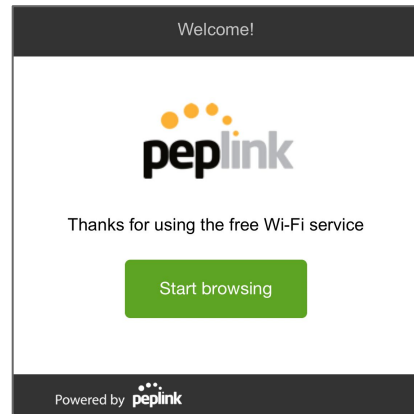
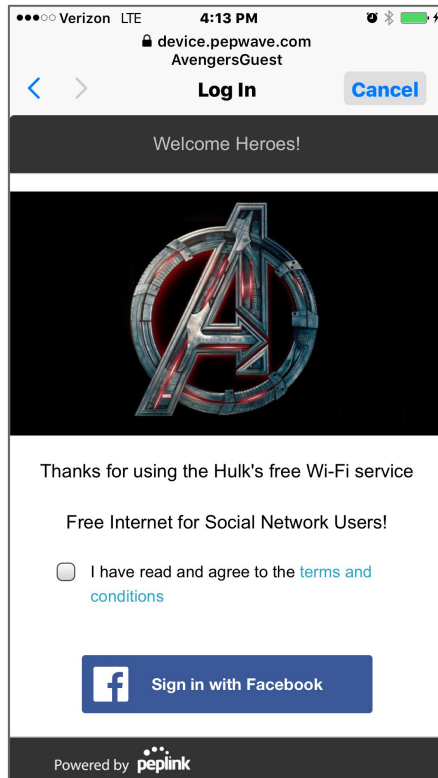
InControl 2 - Captive Portal

Peplink's hosted Portal page for your guest's Wi-Fi experience



Customize and set up your network's **Wi-Fi Captive Portal** however you like!

- Multiple **Authentication methods**
 - Multiple can be active
- **Custom Graphics**
- **Custom Text**
 - Custom **Terms and Conditions.**



Ad Delivery Service

Monetize Wi-Fi Access



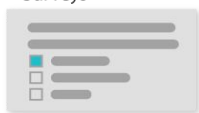
Sliding Carousel



Video Ads



Surveys



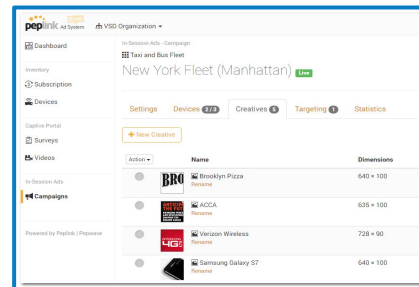
Place ads before Wi-Fi access

- **Carousel** - watch 10 seconds before connecting
- **Video** - watch before connecting
- **Survey** - answer questions before connecting
 - Multiple versions



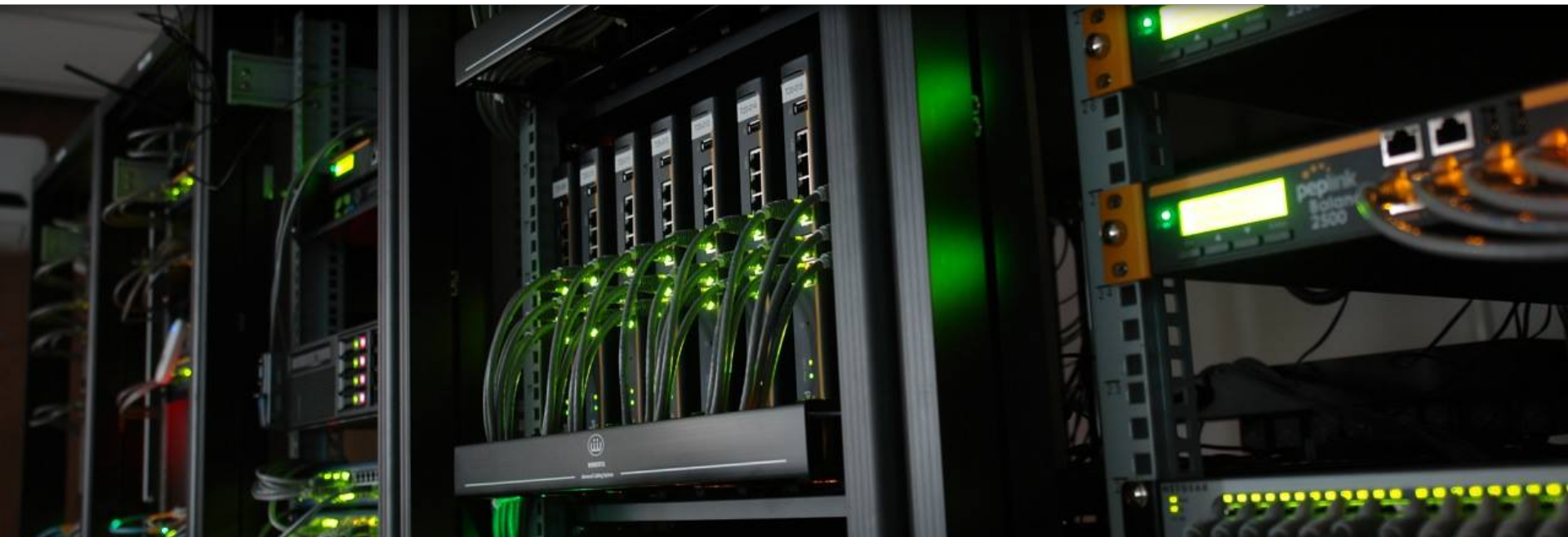
Functionality

- **Insights** - gathers customer metric information for further review
- **Location Based Ads** - Choose ads to play at specific locations
- **Campaigns** - Easily control ad's importance, set start and end dates, and target impressions and/or clicks.



Easy to Manage

Manage **all your campaigns**, across multiple devices, from a **single browser window**. ADS' simple user interface makes creating new campaigns a snap. Plus, you can view all your aggregated reports in one place.



Pepwave AirProbe

Pepwave AirProbe Characteristics



Network Testing

Perform automated and scheduled tests for bandwidth, ping, upload speed, download speed, and application level



Diagnostics

Easily see Wifi utilization, channel utilization, packet distribution, and signal strength for each Wi-Fi device.

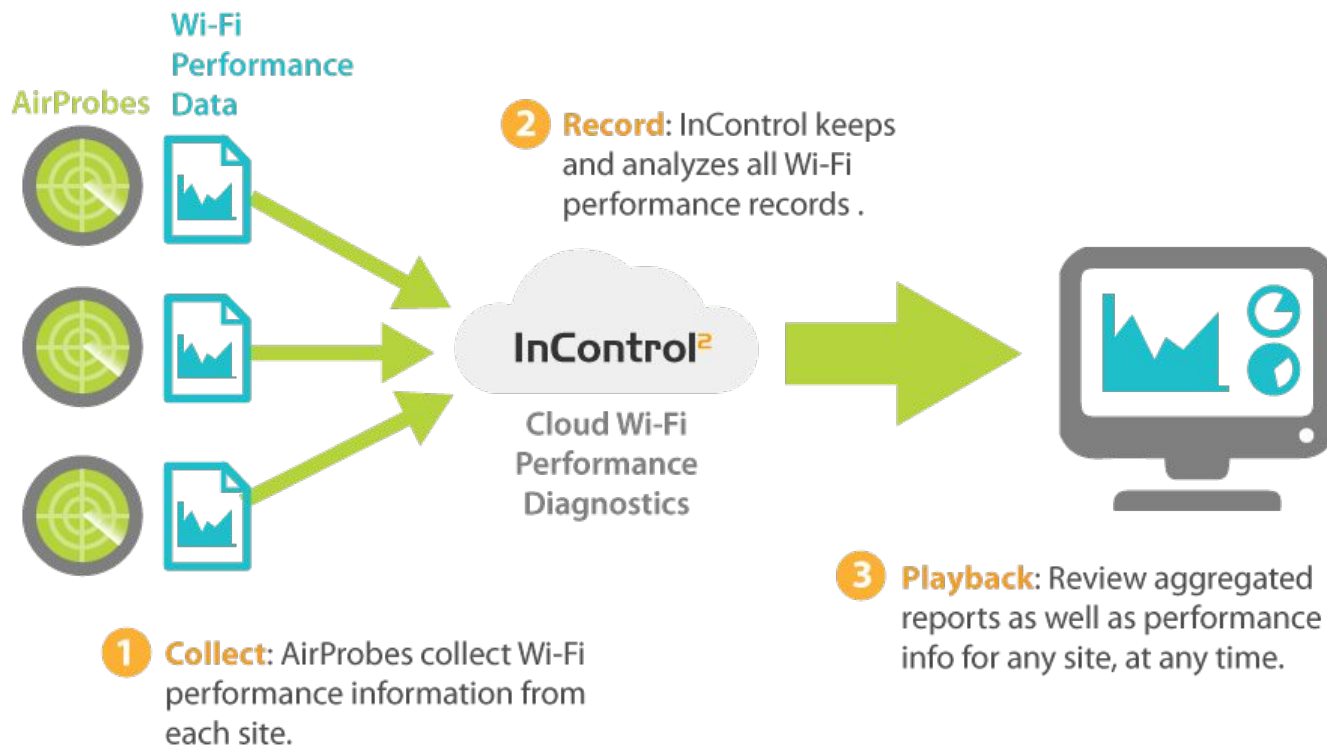


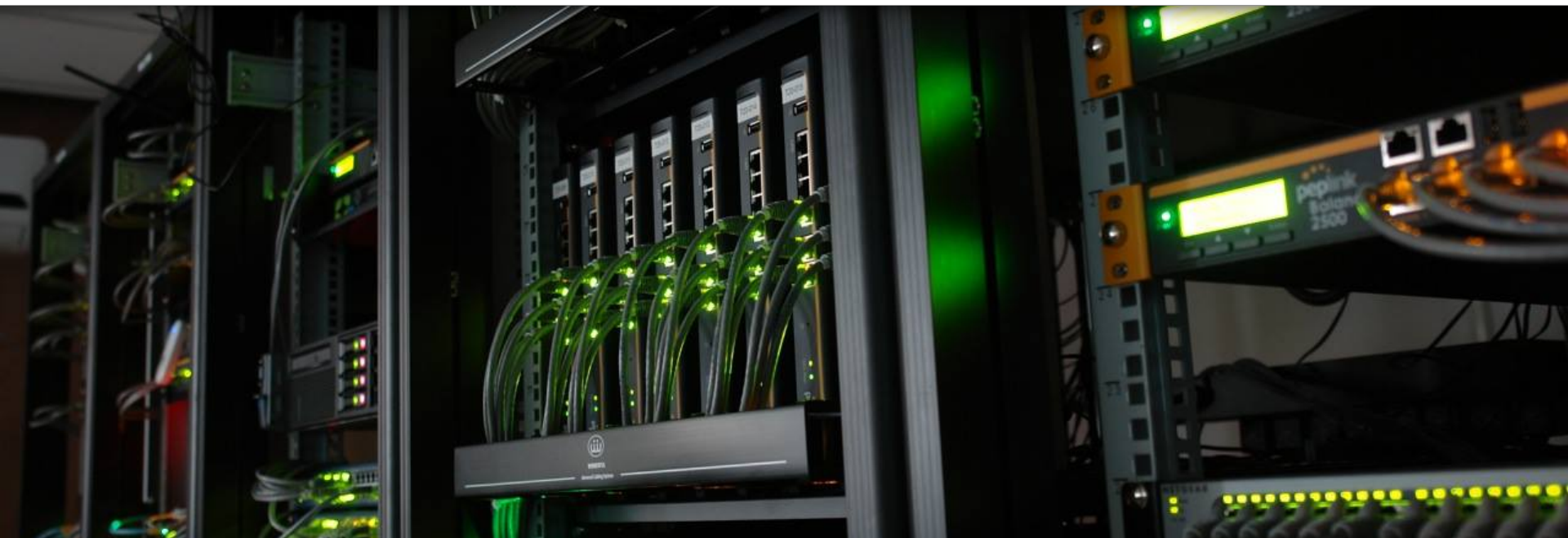
Notifications

Receive alerts by email if the signal strength is too weak or if a Wifi channel is over-utilized.



Pepwave AirProbe WorkFlow





PEPXIM Peplink's IoT Solution

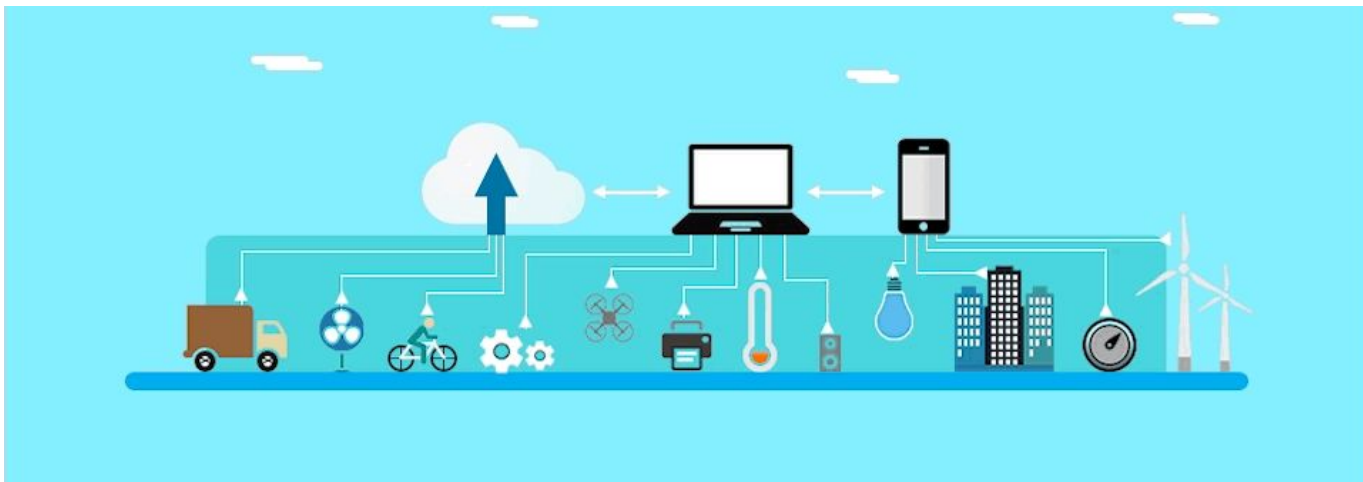
PEPXIM : Overview



PEPXIM - **Pep**link **Ex**tended to **I**nternet **M**achines

By 2020, Gartner predicts there will 20 BILLION connected **Internet-of-Things** devices. Sensing the opportunity, **Peplink** is overwhelmingly proud to introduce our new IoT-focused product brand, **PEPXIM**.

The **PEPXIM Mission Statement** is to simplify management and installation of IoT products and/or solve business problems using IoT technology.



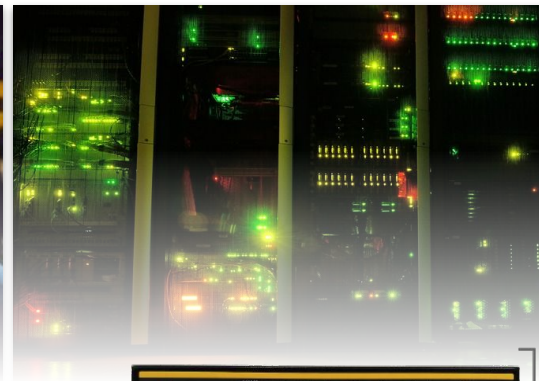
PEPXIM : Overview

PEPXIM products



Peplink: SD-Switch

SD (Software Defined) **Peplink** PoE Switch



- 850W Power Budget
 - Up to 3x PSU!
- Unify VLAN config across network
- Multiple sizes available
 - 8/24/48 port versions



8-Ports



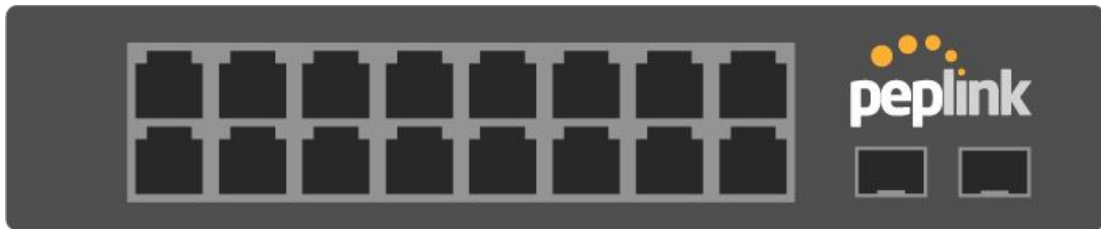
24-Ports



48-Ports

NEW: Peplink 16-Port SD-Switch

Now with LAN Bypass!



LAN Bypass: Keep your network online, even if the SD-Switch loses power.

Fanless Design: Makes it suitable for industrial environments.

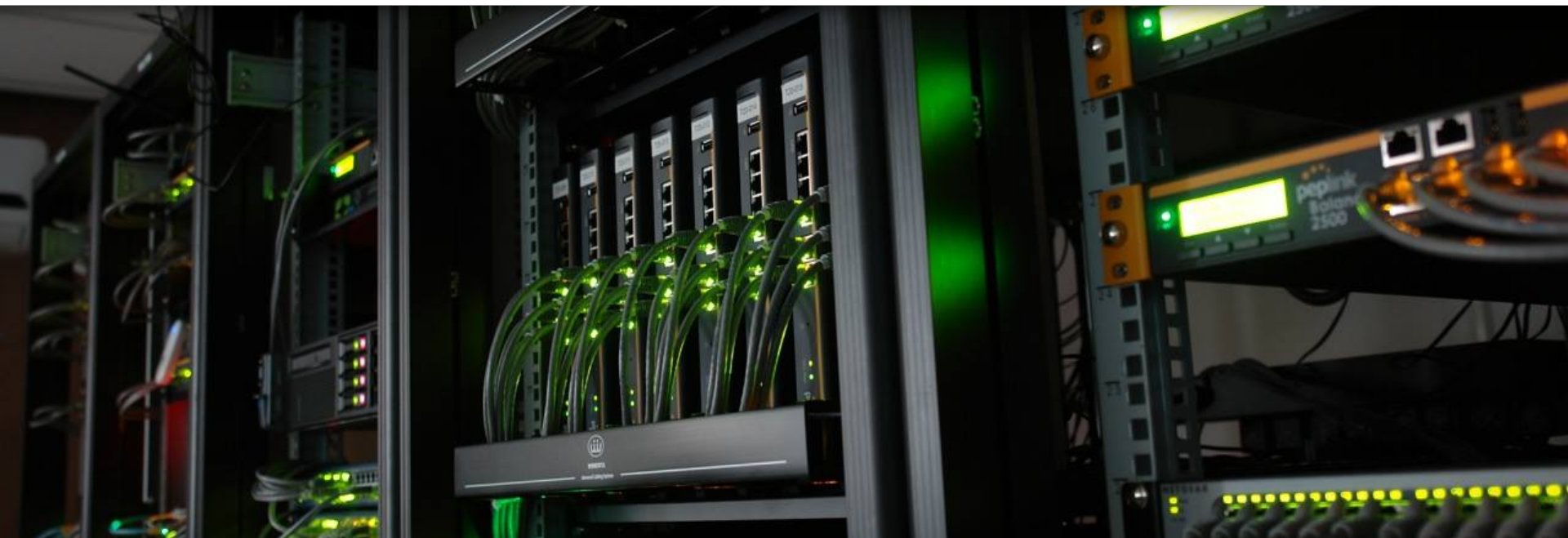
High Temperature Range:
-40°F – 149°F
-40°C – 65°C

Peplink IoT Enabler



Remotely monitor power consumption and turn on/off power for all connected devices.





PEPXIM Cloud Integrated Access Control

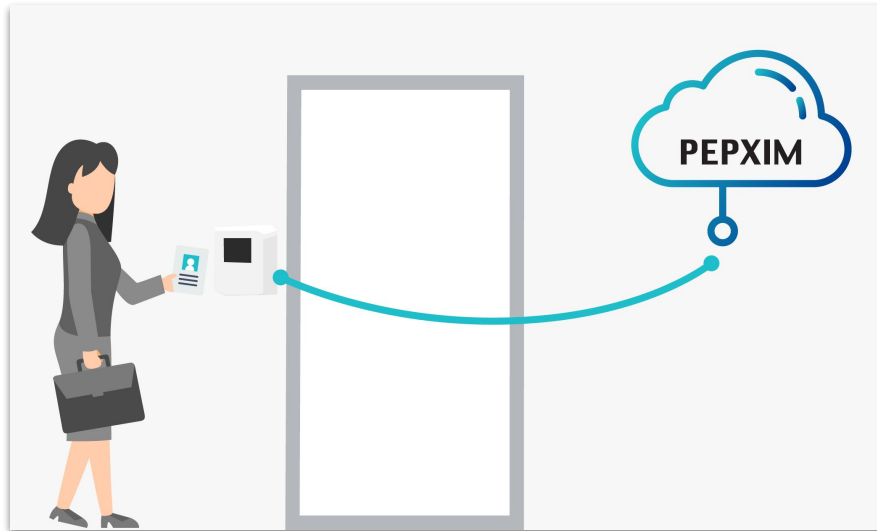
Smart Reader and Time and Attendance App

PEPXIM: Access Control Overview

Pepxim Cloud Integrated Access Control Solution

The [Pepxim Cloud Integrated Access Control Solution](#) consists of the **Smart Reader** and the **Time and Attendance System**; both developed to make attendance management and monitoring simple.

When used with **other Peplink devices as a complete ecosystem**, the concept of a **Smart Office** gets realized.



PEPXIM : Access Control Solution



Smart Reader & Time/Attendance App Advantages vs Traditional Methods:



High Security, Broad Card Compatibility

The **Smart Reader** is compatible with today's most secure card platforms.



Deploy Anywhere, Remote Offices, Even Mobile!

Traditional systems require local servers and controllers. Deploy our Smart Reader across multiple buildings, remote offices, even mobile locations. The Smart Reader can be deployed to **any location with internet connectivity**.



Extensible Cloud Platform: Integrate Into Existing System

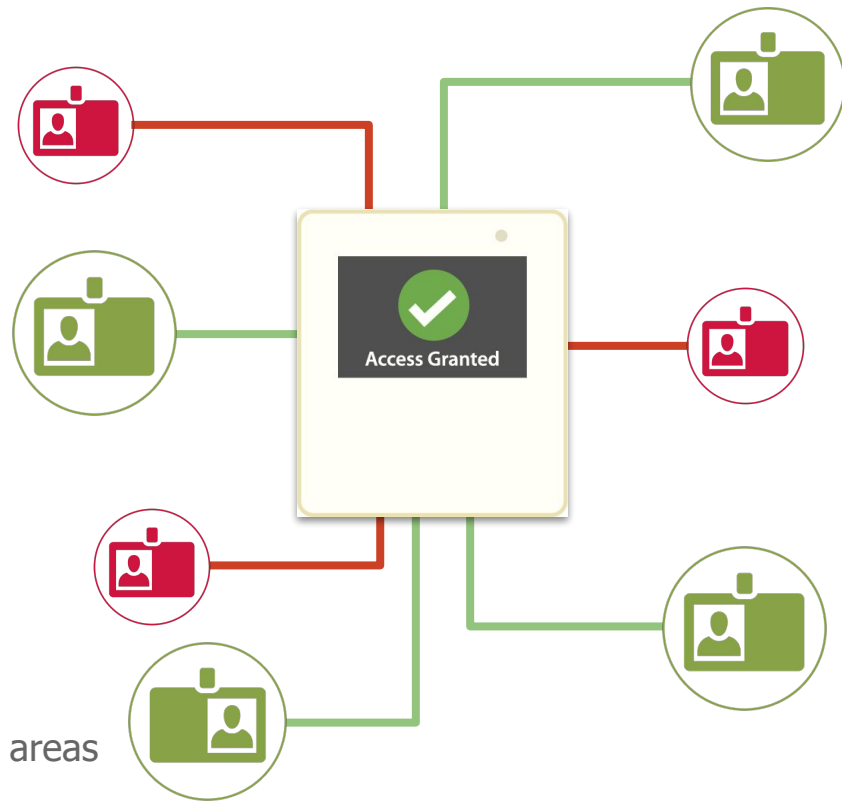
The Pexxim TA Cloud allows you to **integrate reader data seamlessly** into your existing access control or attendance system using the TA Cloud **API**.

PEPXIM: Access Control

Smart Reader



- Compact, plastic **IP55 rated** enclosure
- Powered by **PoE** or **Terminal Block**
- Connects with standard **Ethernet** or **WiFi**
- Works with **NFC supported** cards
- Setup **user groups to gate access** to applicable areas



PEPXIM : Access Control



Time and Attendance App: <https://ta.peplink.com>

The web-based **Time and Attendance application** works in tandem with the **Pepxim Smart Terminal**, allowing HR Managers to **monitor attendance, vacation, and sick leave** for their employees.

Employees can **submit their own leave requests** and all it takes is **one click from Management to have it take effect**.



PEPXIM : Access Control

Time and Attendance App: <https://ta.peplink.com>

The application comes with **an app for iPhone and Android** which allows employees to **update, monitor and maintain their own attendance**, including leave and sick management.

- **Dashboard**: Duty time and Location Access Record.
- **Attendance**: Attendance history.
- **My Leave Balance**: History of leave taken and report of remaining balance.
- **Access Log**: Complete Access Log with location details, time and date.

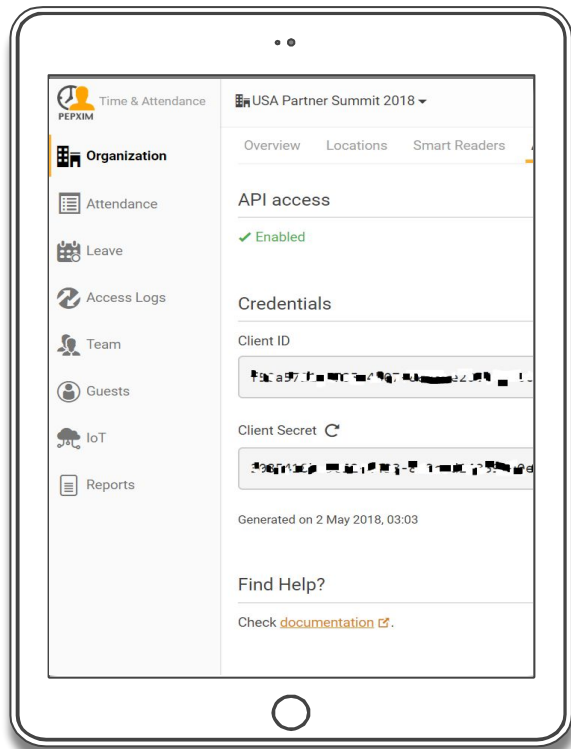
Can even be used as a fire register, know who is in the office building at any time!



PEPXIM : Access Control



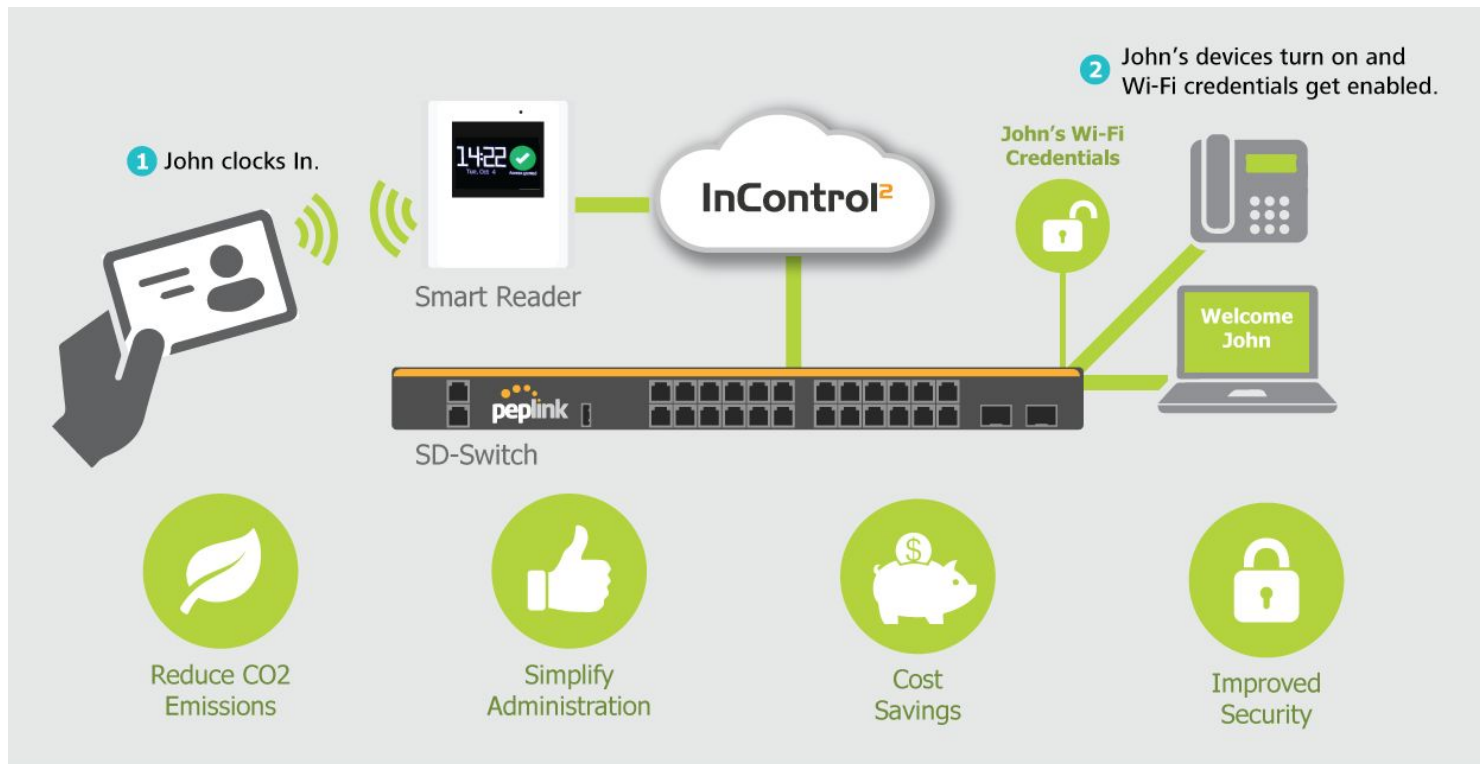
Time and Attendance App: API Integration

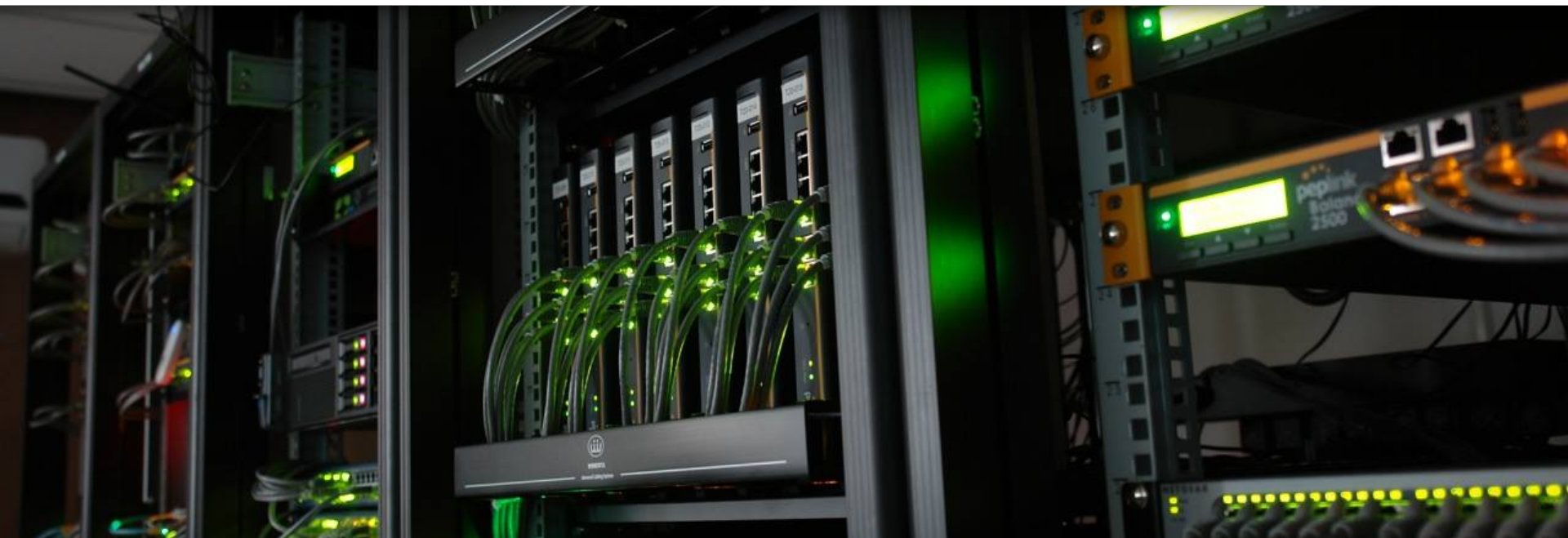


PEPXIM : Smart Office



Possibilities





PEPXIM SD-PMU

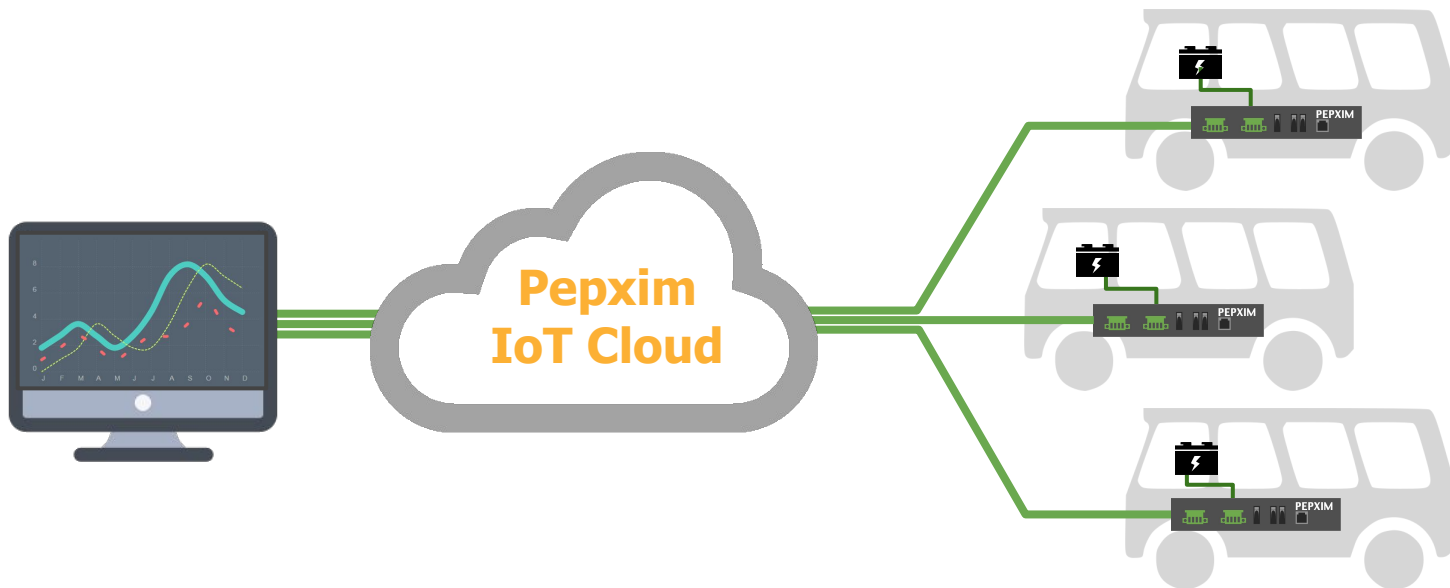
Software Defined Power Management Unit

PEPXIM : Overview



SD-PMU: Software Defined Power Management Unit

Whether enabling free Wi-Fi for buses, or maintaining surveillance on maritime deployments, you need to rely on battery power. The **SD-PMU** can reduce setup costs, operational complexity, and maintenance expenses



PEPXIM : SD-PMU



Common Challenges

Many customers use our routers in a variety of vehicles: cars, trains, ships, etc. and face the same common challenges.



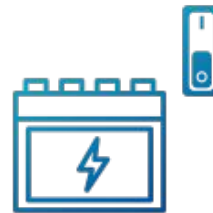
Fluctuating Voltage

Vehicle batteries are designated to operate at a specific voltage, which fluctuates depending on lifespan, state-of-charge, etc. This can make devices function unreliably or shut down.



Inability to Troubleshoot

In the event of devices losing power, there is no information available on how the battery has been performing up to that point.



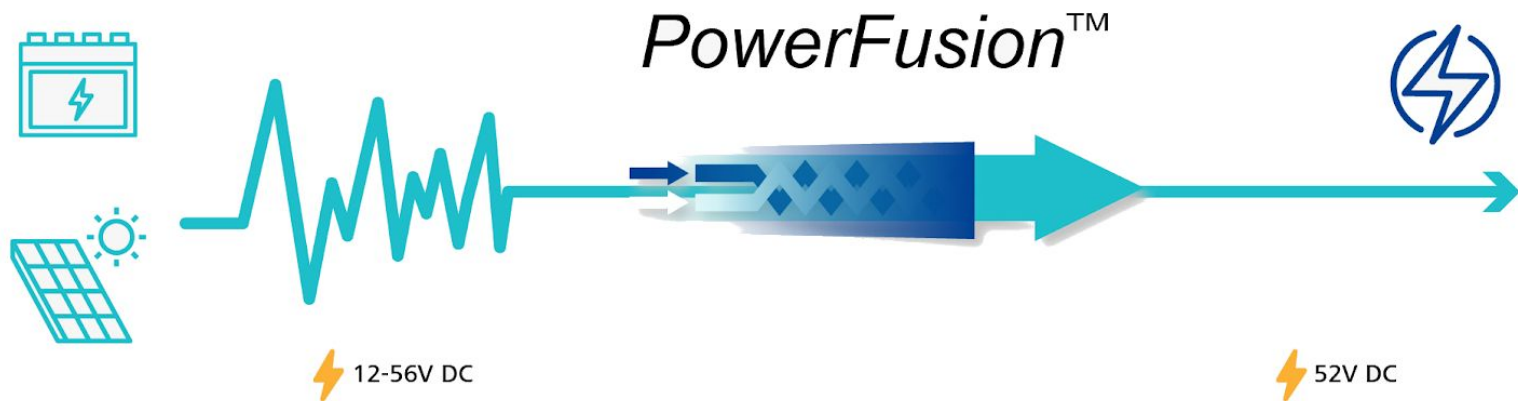
Battery Drainage

If batteries are excessively drained, they will be unable to start up the vehicle. Overdraining batteries will also damage them.

PEPXIM : SD-PMU



PowerFusion



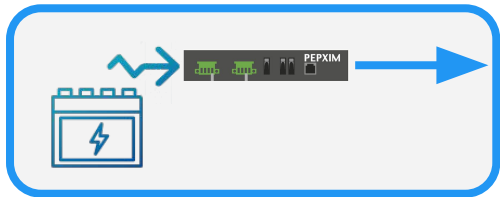
Pepxim's patented PowerFusion™ technology allows vehicle and vessel power systems to achieve uninterrupted, reliable, and stable electrical power supplies. Using our voltage regulation circuit, you can aggregate multiple DC power sources with a wide voltage range from 12 to 56 volts, and transfer to a constant voltage power supply.

PEPXIM : SD-PMU

PowerFusion



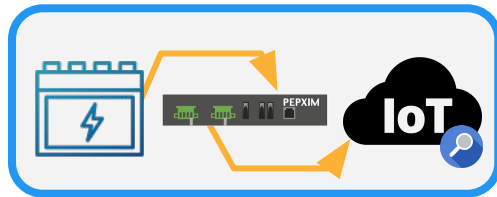
Pepxim's software defined power management units, or SD-PMUs, are designed to use PowerFusion™ technology to address various power related issues:



Regulating Voltage

Low or fluctuating voltage input is converted to reliable streams of 52V power output.

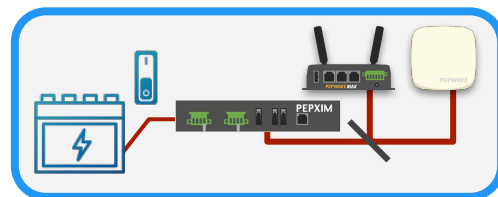
The SD-PMU can also output designated voltage values according to usage — for instance, sensitive onboard telemetry, surveillance camera, and Power over Ethernet appliances.



Remote Monitoring

The SD-PMU records battery voltage information and sends it over the IoT Cloud for remote monitoring.

In case the SD-PMU cannot reach the IoT Cloud, it will locally store voltage records until it can upload the data. This can help you gain information about power usage and failures.



Voltage Sensing

The Low Voltage Disconnect function shuts off access to the battery if the voltage level falls below a defined threshold.

When thresholds are breached, the Ignition Sensor function will shut off power to connected devices when the vehicle ignition is turned off.

PEPXIM : SD-PMU

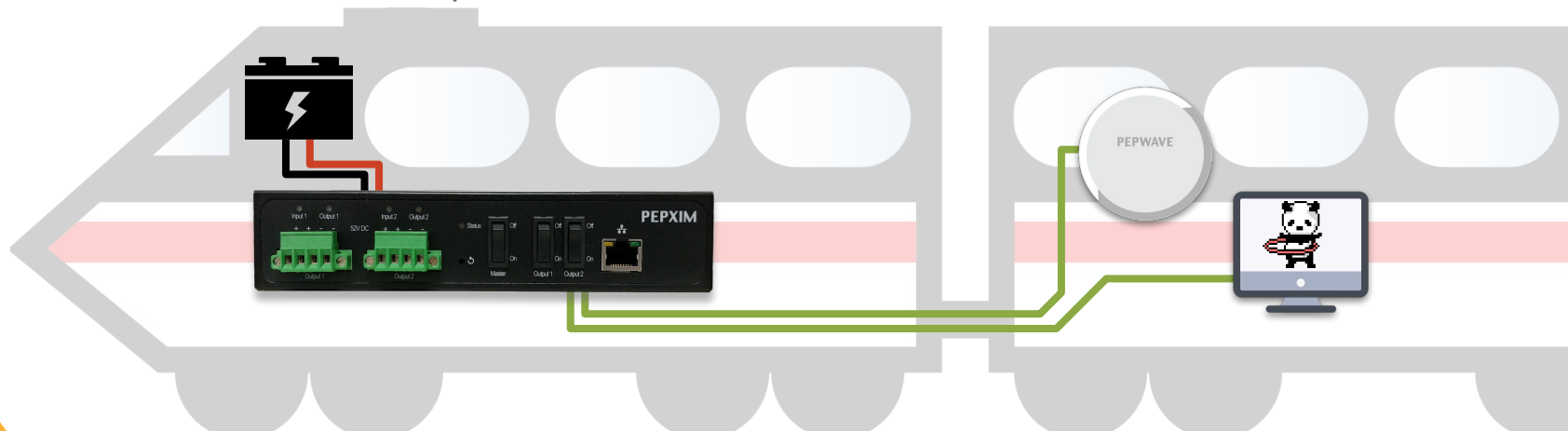


Statistics

The SD-PMU can reduce setup costs, operational complexity, and maintenance expenses by **performing the functions of three devices:**

- a low-voltage disconnect monitor
- a DC-DC converter
- and a DC distribution panel

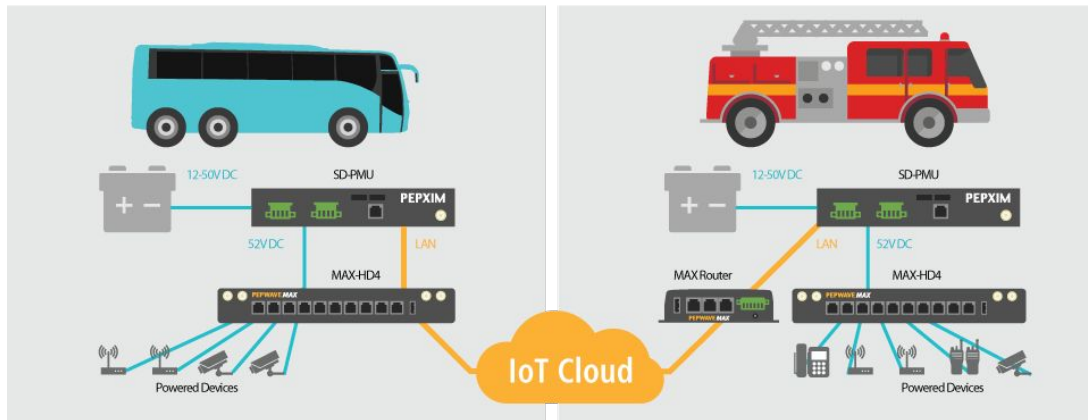
- **Compact and Durable metal enclosure**
 - 7.5x9x1.5in
- **Multiple Power inputs and outputs**
 - 2x 12-56V DC Terminal Block inputs
 - 4x 52V DC Terminal Block outputs



PEPXIM : SD-PMU



Deployment Examples



Vehicle Deployment

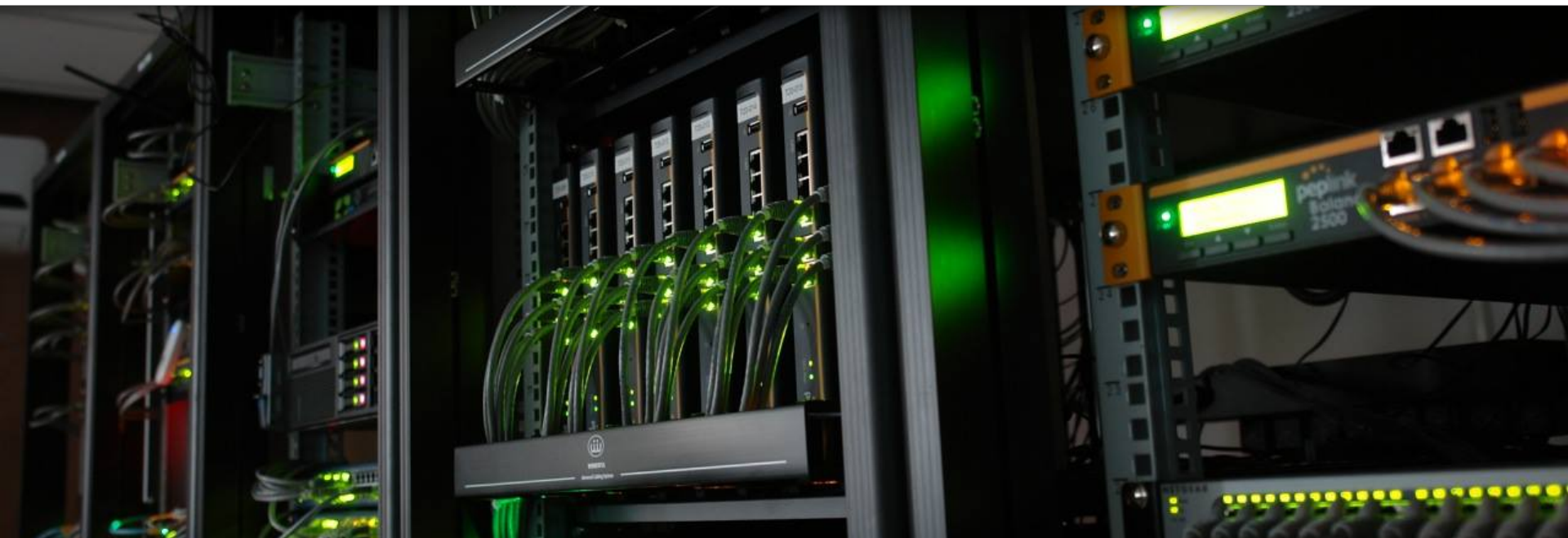
Connect the SD-PMU to your car battery to deliver reliable 52V power.

Connect the LAN port to your router in order to remotely monitor battery output via the IoT Cloud. With 52V power delivery, the SD-PMU can support switches with 802.3at PoE output.

Mission Critical Out of Band Management

For unbreakable remote access to the SD-PMU, a secondary router can be connected to the LAN port. That way, the SD-PMU is accessible even when the main router loses connectivity.

An additional benefit is that power to the main router can also be remotely scheduled from the IoT cloud.



PEPXIM Cloud-Based GPS Tracker

PEPXIM : Cloud-Based GPS Tracker



Overview

This **battery-powered** device features **two redundant SIM slots**, allowing for unbreakable connectivity and seeing your **GPS information instantaneously and in real time**.

Pepxim's cloud-based GPS software goes beyond simply pinpointing the location of your fleet, you'll be able to take full advantage of it's **geofencing features**, as well as program when you want the device to be in a **power-saving mode** to extend battery life.



PEPXIM : Cloud-Based GPS Tracker



Overview

- **Rugged, all-weather graded enclosure**
 - IP67 Rated
- **Battery Powered**
 - 4x C-size batteries
 - Rechargeable lithium battery
 - Up to 6mos Battery Life
- **3G Cellular**
 - Redundant SIM slots
 - Internal cell antenna
- **High sensitivity assisted GPS receiver (72 channels) and concurrent use of GPS/GLONASS satellites.**

TOP

BOTTOM



SIM
slots x2

PEPXIM : Cloud-Based GPS Tracker



Deployment methods



Power Save mode

the device will log any event
user can set the report period and let the device go
online to report the status
data type includes: battery level, temperature, external
power connect state, ISP name, cellular signal, EC/IO



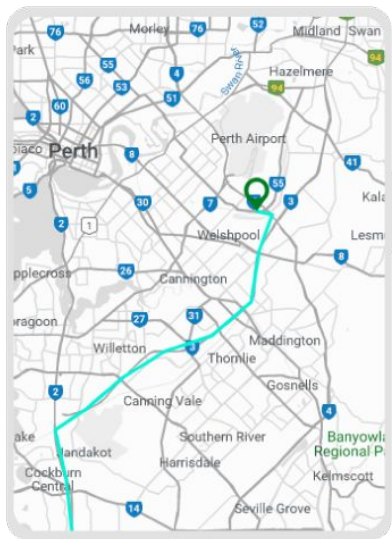
On-Trip mode

the device will keep sampling the GPS data
It will keep reporting the logs to the cloud
data type includes: trip start, trip end, power on,
heartbeat, distance, duration

PEPXIM : GPS Tracker



Deployment Methods



Pepxim GPS Tracker
Cloud

Main Connection

Backup Connection



- **Vehicle Rental**: Charge different rental fees based on vehicle location.
- **Logistic Companies**: Give better customer service by giving them the exact location of the vehicle carrying their parcel.

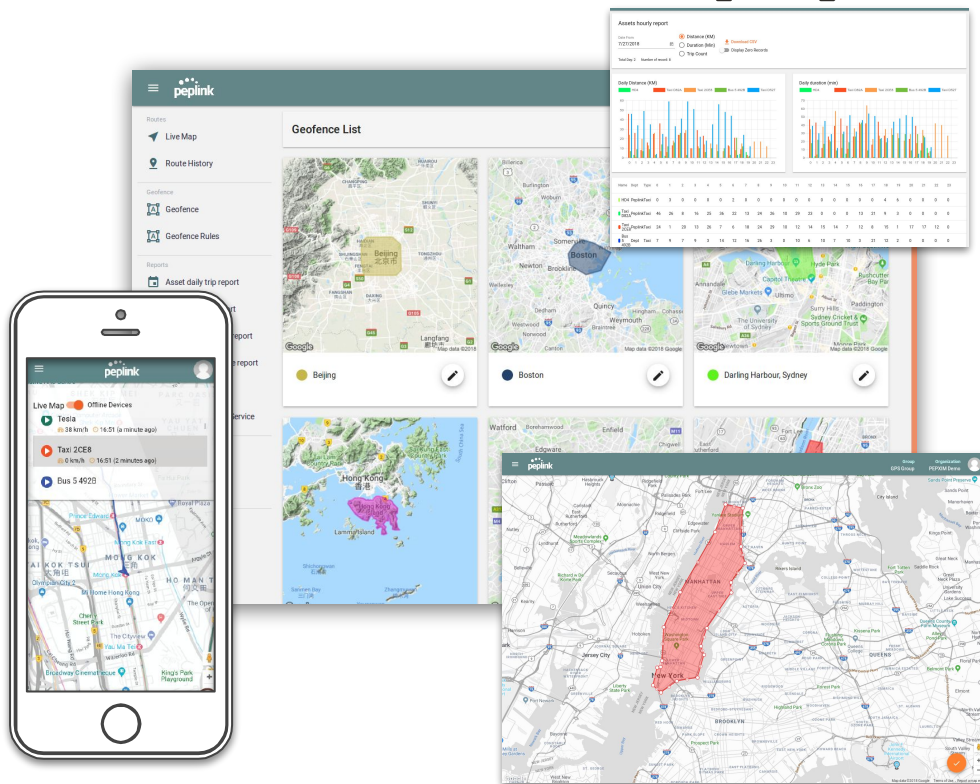
PEPXIM : GPS Tracker

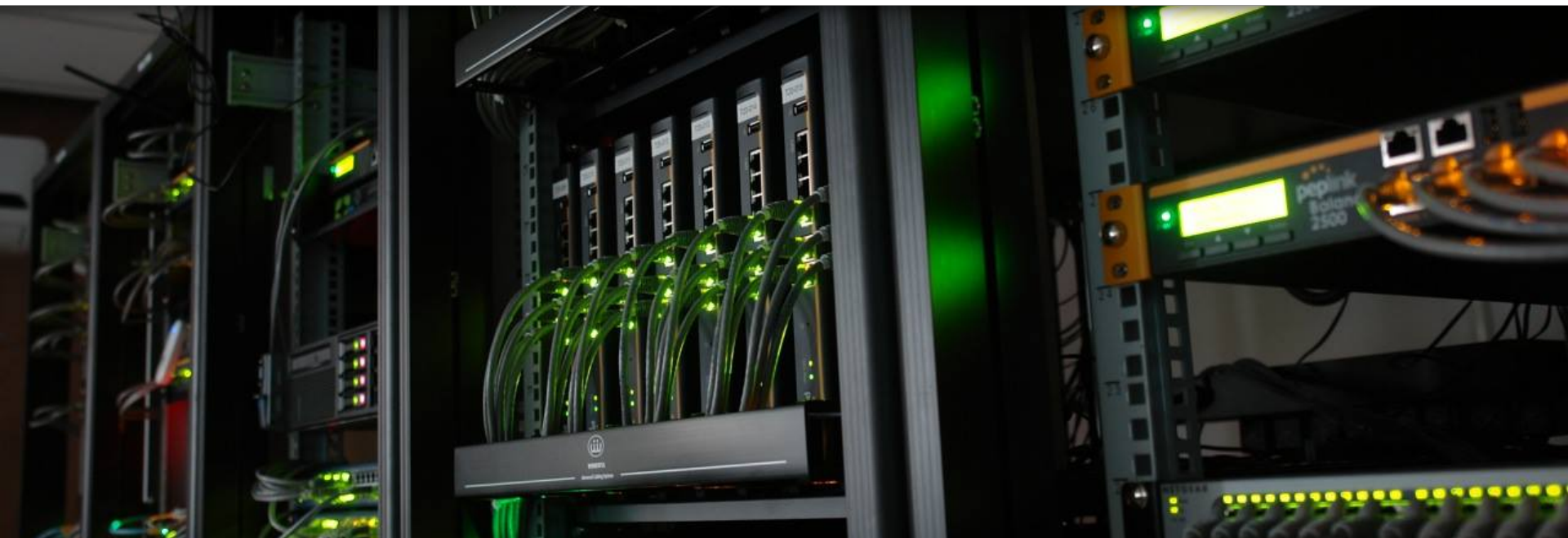
GPS Tracker Cloud App



- **Cloud-Based Monitoring**
- **Geofence Management**
 - Comprehensive Reporting Package
- **Mobile Version Available**

Finally, it's important to mention that the cloud-based application **also supports any existing GPS supported Peplink MAX devices!**





PEPXIM Pepsign
Cloud-Based Digital Signage

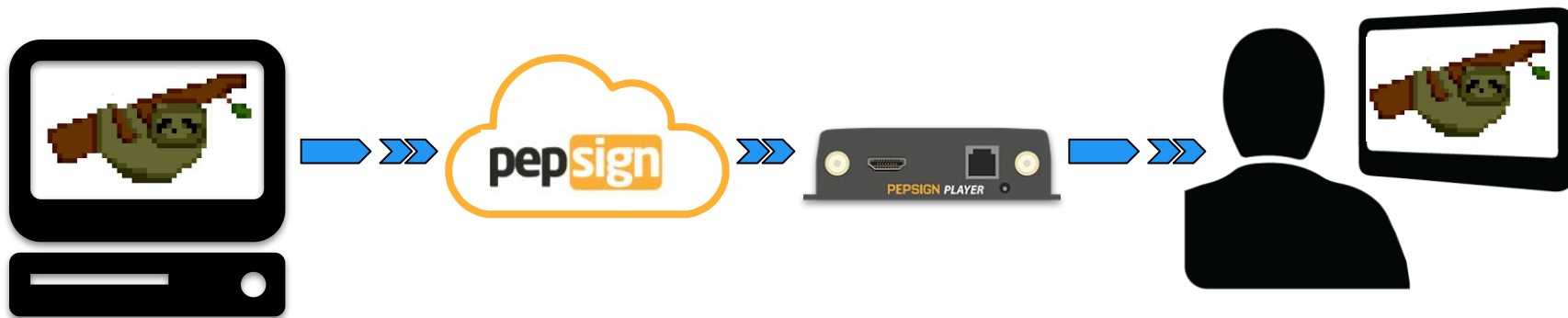
PEPXIM : Pepsign

Cloud-Based Digital Signage Solution



Pepsign is Peplink's innovative **cloud-based digital signage solution**, designed to **build and manage advertising** or informative materials **displayed on screens** anytime and anywhere.

Easily create and manage effects and animations using our **powerful built-in tools** quickly and easily!



PEPXIM : Pepsign

Workflow



- 1) Access the Pepsign application from any connected device and create or import content.



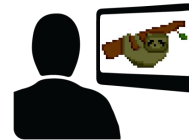
- 2) Save to the Pepsign cloud

01

04

03

02



- 4) Play on connected TV, monitor or LED wall



- 3) Schedule and push content to one or multiple connected Pepsign Players

***The Pepsign player has 32GB storage and will play content from the local storage, saving bandwidth**

PEPXIM : Pepsign

Cloud Application



SIGNAGE NETWORK

[Home](#)

[Players](#)

CONTENT ADMIN

[File Manager](#)

[Media Playlist](#)

[Datas](#)

[Scenes](#)

[Channels](#)

USER PROFILE

[Users](#)

[My Profile](#)

11 Online Players:

Workshop Span Player

Workshop Horizontal Player

PEPSIGN Player 0

Workshop TA Demo Player

Desmond Player

Corridor Speed Fusion Player

Corridor Wireless SDWAN Player

Corridor Public Safety

Corridor TA IOT Player

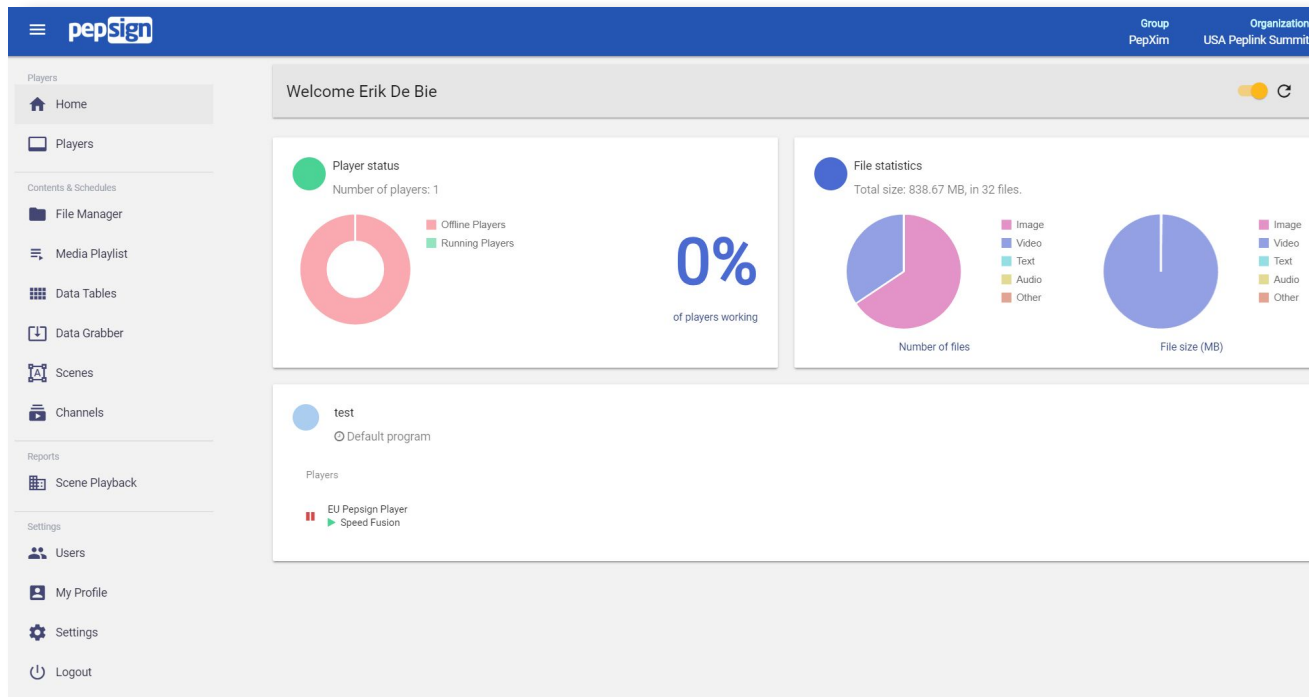
Corridor Pepsign

PEPXIM : Pepsign

Cloud Application Dashboard



The main screen shows the dashboard with statistics.



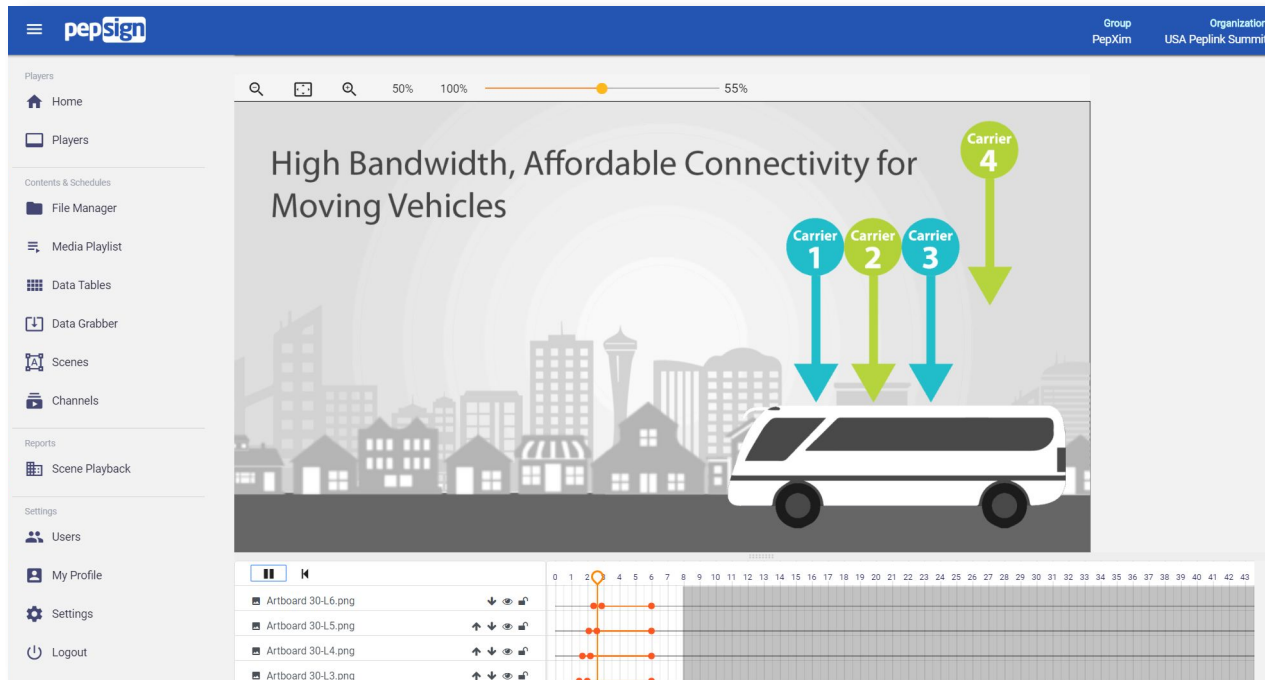
PEPXIM : Pepsign



Overview

Easy-to-use Scene Editor:

Timeline and keyframe based; mirrors most video editor UIs for ease of use; lots of effects.



PEPXIM : Pepsign



Data Grabber

Automatically update information from an online source using RSS feeds.

-News crawl, stock prices, etc.

pepsign Group: PepXim Organization: USA Peplink Summit

< Edit Data Grabber [Save] [Delete]

Name
CNN News Feed

URL
http://rss.cnn.com/rss/edition.rss [Refresh]

Interval
Every 30 minutes

DataTable
CNN News Feed

Type ☒ RSS ☐ Table ☐ UL List

| | A | B |
|----|--------------------------|--|
| 10 | 2018-09-26T10:28:00.000Z | Third case of monkeypox reported in the UK |
| 11 | 2018-09- | Mourinho's Man United crisis deepens |

Preview text: A third person has been diagnosed with n... Manchester United was unceremoniously

PEPXIM : Pepsign



API Compatible

- **Conditional displays based on API fetch requests.**
 - News crawl, stock prices, etc.



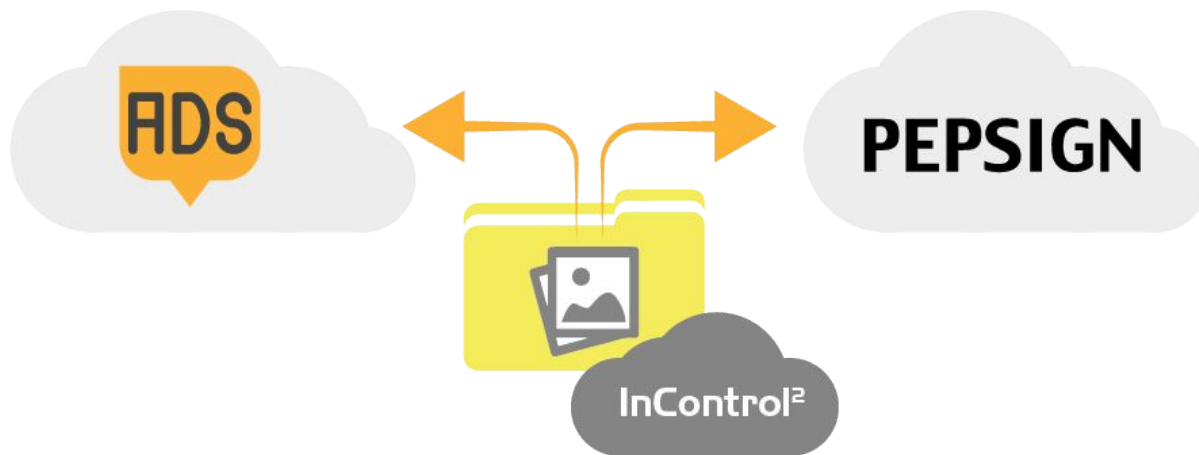
PEPXIM : Pepsign



Integration with Peplink and Pepxim Products

Pepsign can also be integrated with other **Peplink** and **Pepxim** products:

- **InControl 2** allows you to **share assets** between the **Pepsign** server and the **Ad Delivery Service**.
 - **Design a scene** in Pepsign and **render as a movie** for use in **ADS**.

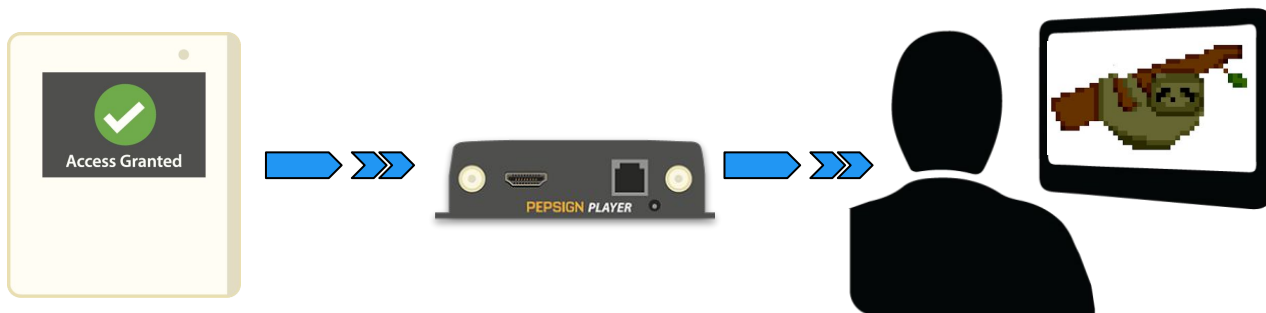


PEPXIM : Pepsign



Integration with Peplink and Pepxim Products

- **Pepsign video content** can be displayed when **triggered by Pepxim Smart Readers**.



Stay **Connected** & Up-to-Date



Social Media

Stay up to date on the latest offerings from Peplink on all the major Social Media channels.

Community Forum

Our Forum (forum.peplink.com) truly keeps you connected to all the latest from Peplink directly.

In addition, the forum is a direct channel to our Teams for questions, help, etc.

