

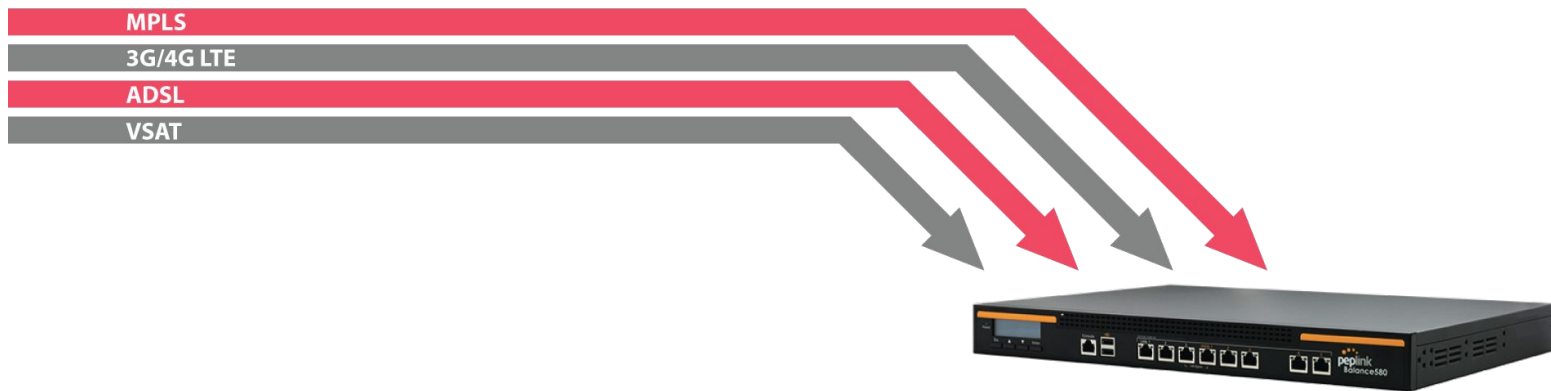


Peplink Ecosystem

Core Technologies

Peplink Core Technologies

Load Balancing

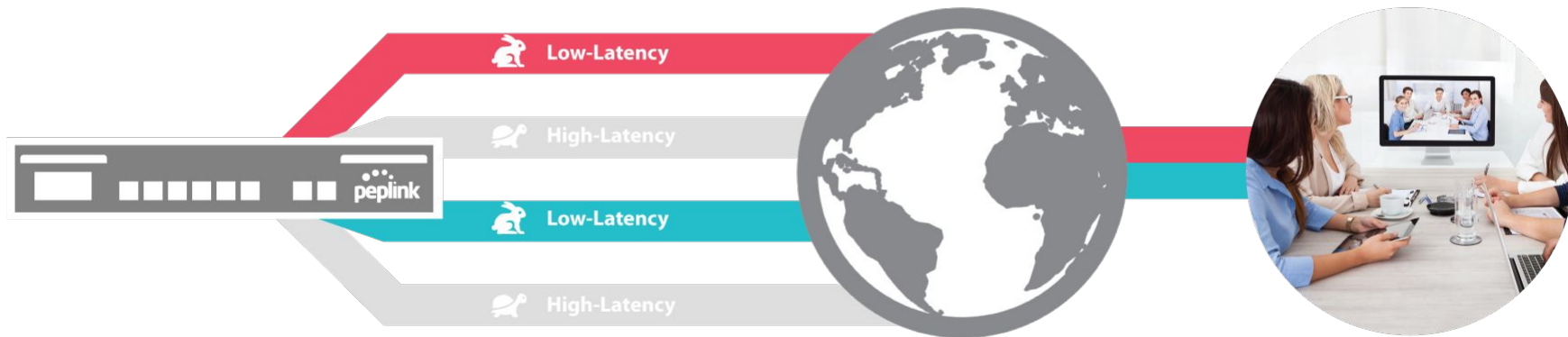


- Peplink intelligently load balances traffic between all WAN links.
- Choose between 8 load balancing algorithms to meet your needs.
- All links are actively used and automatically back each other up.

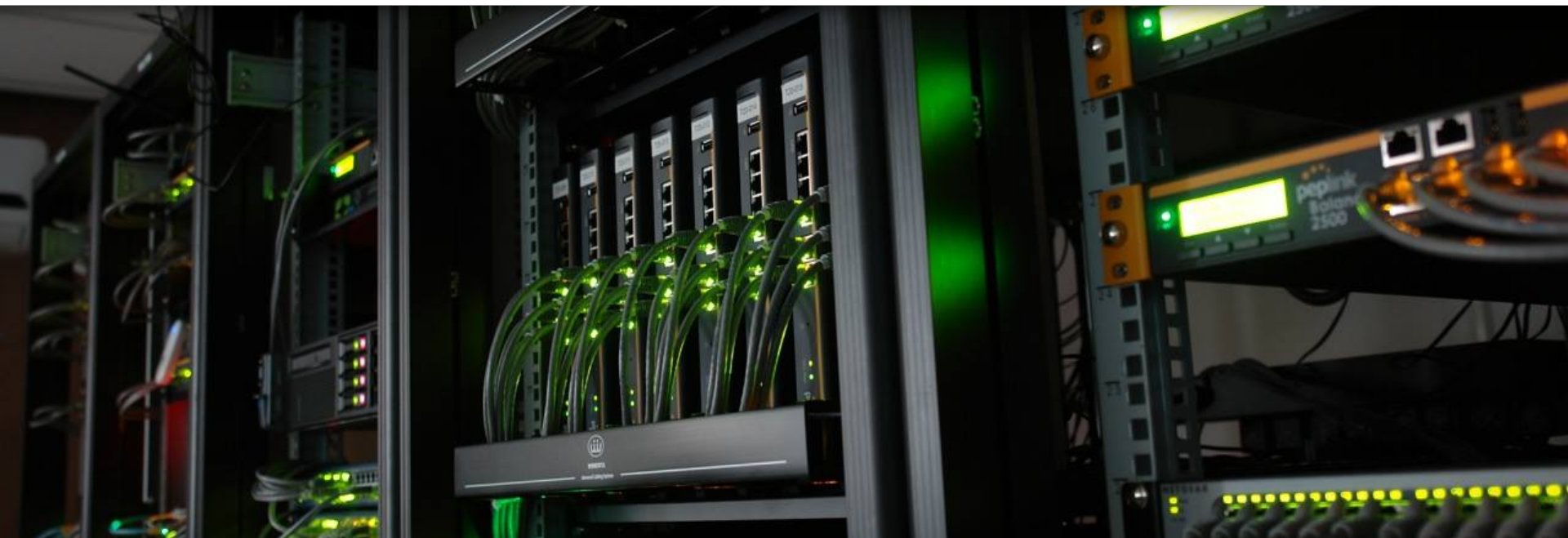
Peplink Core Technologies

Load Balancing application - VoIP

Stuttering VoIP calls and unreliable videoconferencing?



Send VoIP and videoconferencing traffic through the lowest-latency connections.

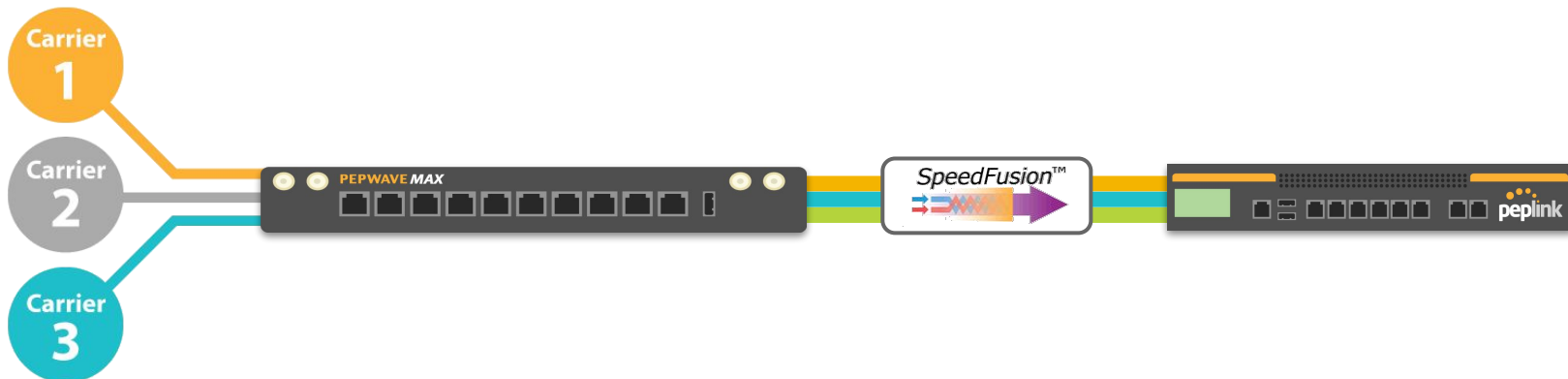


Peplink's SD-WAN: SpeedFusion

Peplink's SD-WAN: SpeedFusion



Overview



- Patented technology, creating a **single VPN across all WANs**.
- Bandwidth from multiple WANs are bonded at the **packet level**.
 - 256-bit AES encrypted traffic utilizes all healthy WANs.
 - Aggregated speed, even for a **single user or session**.
 - Sessions persist, even when individual WAN links lose connection.

Peplink's SD-WAN: SpeedFusion



Overview

- **Peplink to Peplink VPN**



- **2x SpeedFusion capable units (min)**
 - Different models of Peplink/Pepwave devices can create different levels of PepVPN/SpeedFusion
- **Public IP on at least 1x WAN connection**
 - If the WAN is not a Static Public IP, register it with a supported **DDNS** service and we can create **SpeedFusion** to the WAN DDNS host name

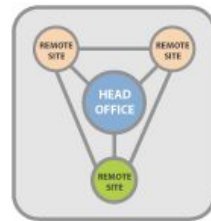
- **Multiple Configuration Types**



Point to Point



Star
(Point to Multi-Point)



Full Mesh

- **Multiple Deployment/Setup Methods**



Peplink UI

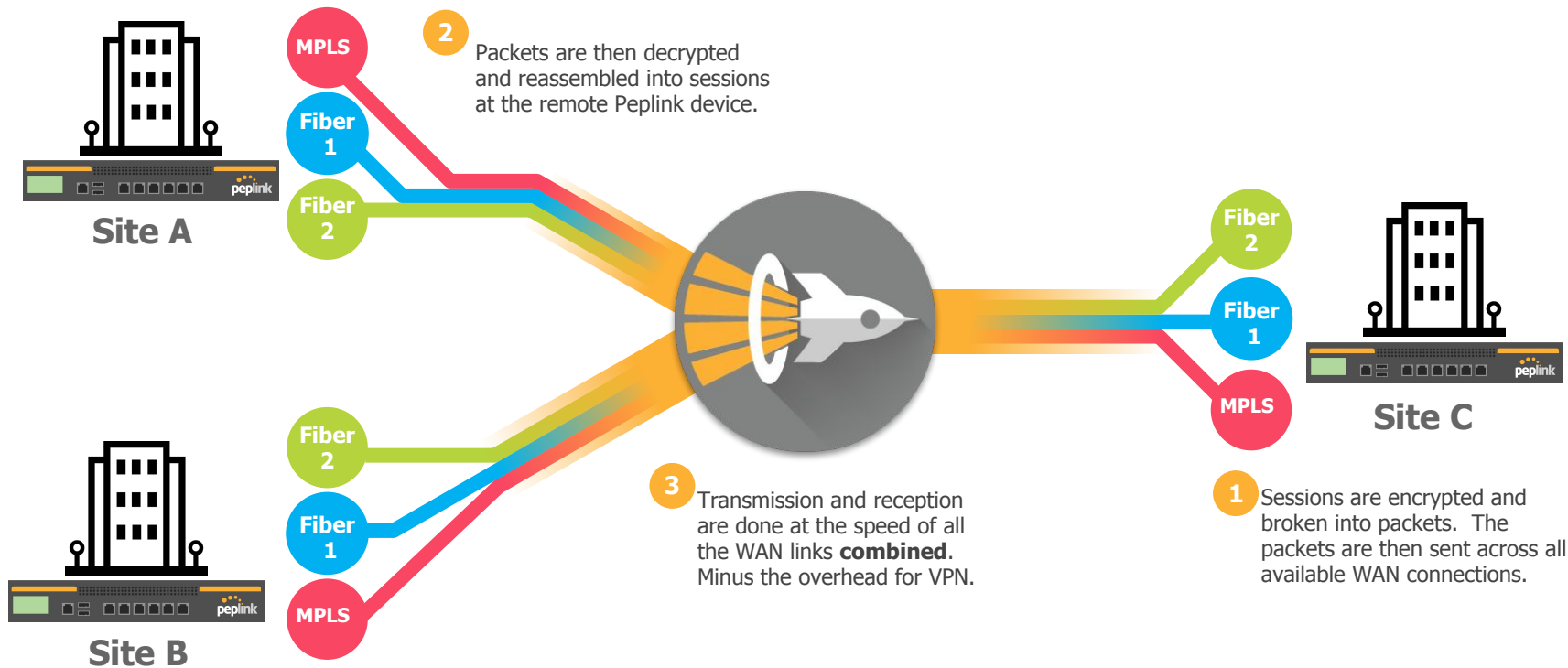
OR



Zero-Touch

SpeedFusion

How it works



Peplink's SD-WAN: SpeedFusion

Core Technologies



Bandwidth Bonding

BB

Combine the speed and bandwidth of multiple WAN connections.

Hot Failover

HF

Switch from one WAN connection to another while keeping your sessions intact.

WAN Smoothing

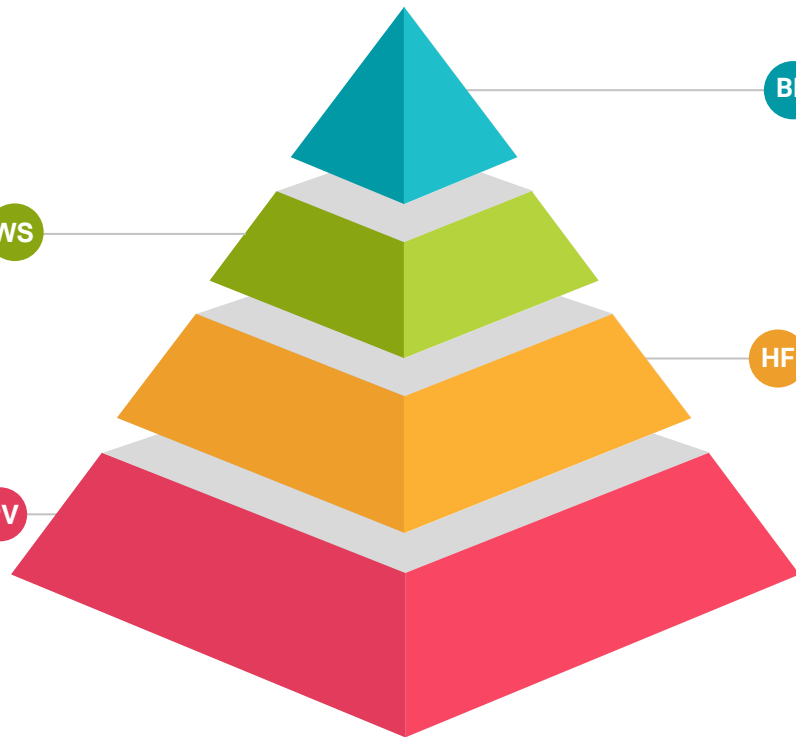
Use multiple WAN connections to create a single, jitter-free data stream.

WS

PepVPN

Offers the benefits of IPsec, plus a variety of performance and reliability features.

PV



SpeedFusion: Hot Failover

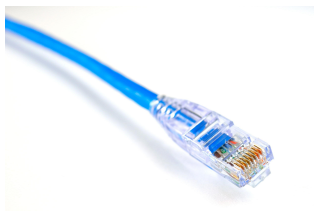


Enables you to change connections while keeping your session intact.

Verticals and applications that benefit from Hot Failover:



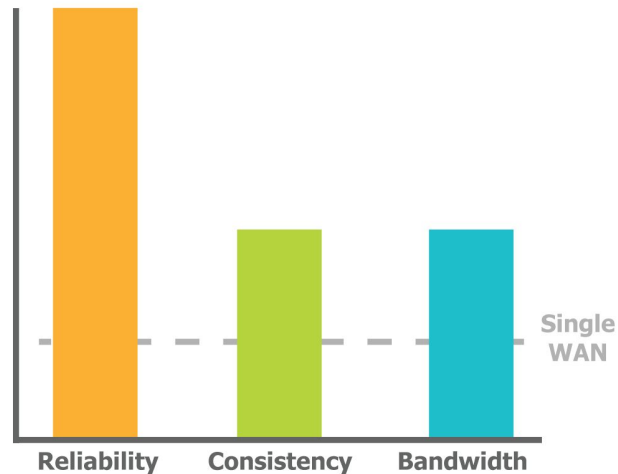
Small Offices



Long-Distance Ethernet



Retail Connectivity



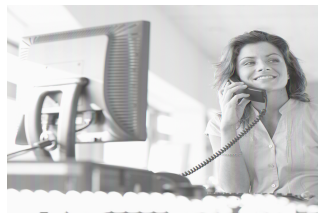
Useful for deployments where you need reliability while keeping costs down.

SpeedFusion: WAN Smoothing



WAN Smoothing uses bandwidth to cover rough spots in connectivity.

Verticals and applications that benefit from WAN Smoothing:



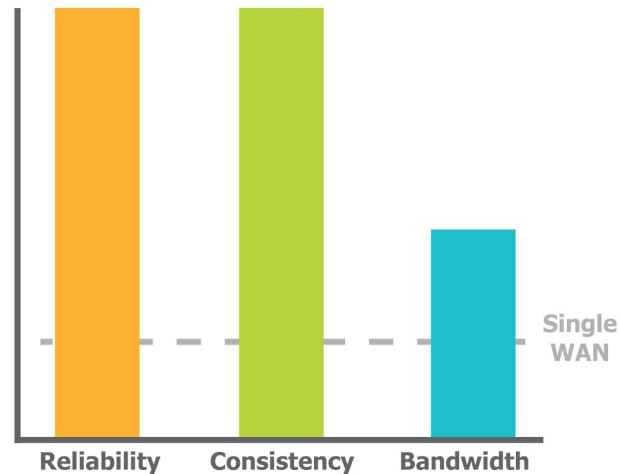
VoIP



Videoconferencing

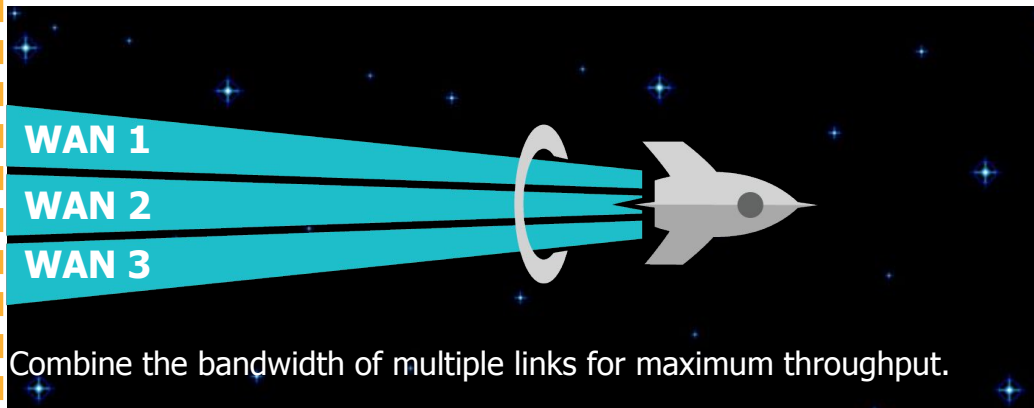


TV and Radio Broadcasts



Useful for deployments where improving consistency is more important than improving bandwidth.

SpeedFusion: **Bandwidth Bonding**



Verticals and applications that benefit from Bandwidth Bonding:



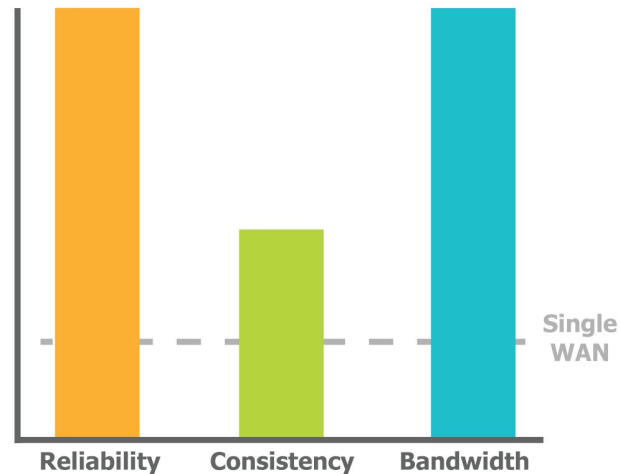
MPLS Alternative



Remote Surveillance











In-Vehicle Connectivity

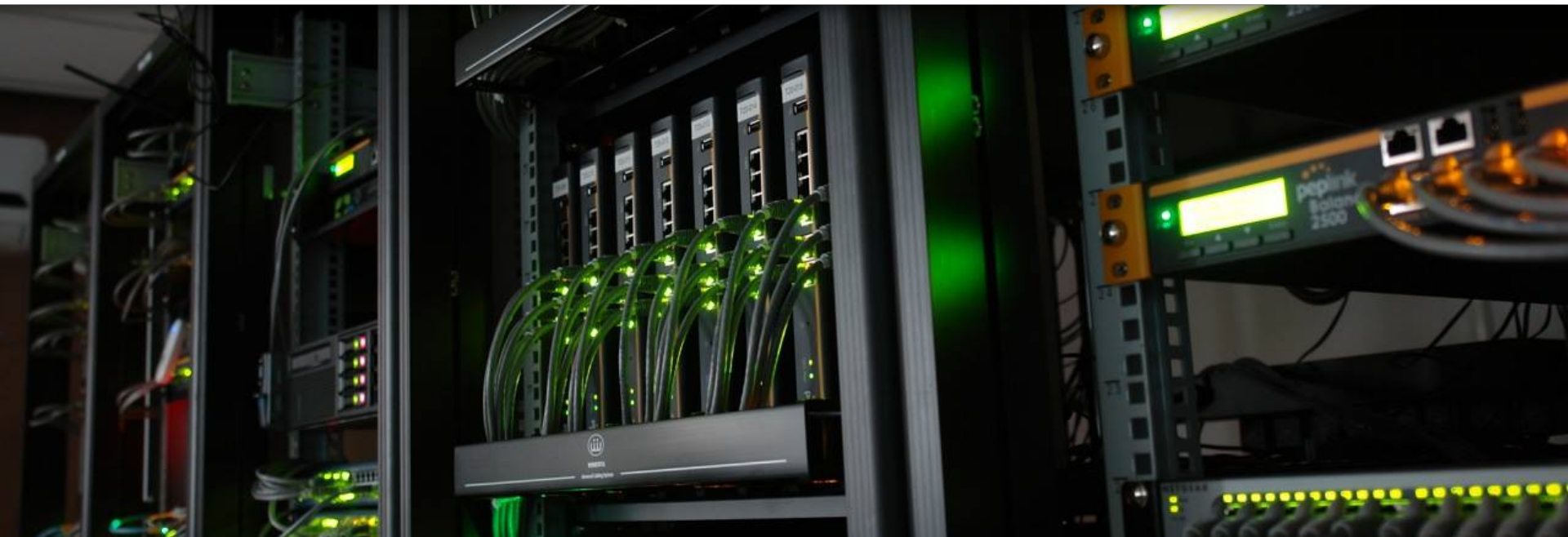


Useful for deployments where you need as much speed as you can get.

SpeedFusion: Core Technologies



	Hot Failover	WAN Smoothing	Bandwidth Bonding
Provides:	Unbreakable Sessions	Reliable Streaming	Blazing Speed
Applications	<ul style="list-style-type: none">• ATM• POS• Retail• Online trading	<ul style="list-style-type: none">• VoIP• Videoconferencing• Live Broadcasting	<ul style="list-style-type: none">• MPLS Alternative• Remote Area Cellular Connectivity.• Branch Office VPN• Transportation / Maritime
Customers	  	 	  



InControl 2

Cloud based Monitoring, Management and Zero-Touch Configuration

InControl 2

Introduction and Overview

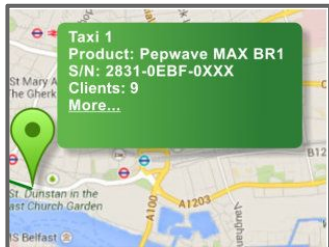
InControl 2 is our **Cloud-based** device management, monitoring, and reporting tool used with **Peplink/Pepwave** devices.

With **InControl 2**, you'll get advanced **administration** tools, unprecedented device **visibility**, and comprehensive **reporting** in an easy to manage package.

With both **Public and Private** versions available, as well as a **Smart Device Companion App**, **IC2** is flexible and robust enough to keep eyes on your deployment.



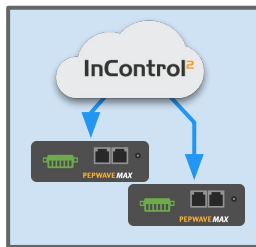
InControl 2: Features



GPS Fleet Tracking

Peplink's MAX MOBILE units can report back fleet information to InControl 2 in an easy to review package

- HD and BR Series
- Can disable to save Data costs
- Downloadable to work in other GPS programs



Zero Touch Config

InControl 2 has a number of cloud based configuration options to make your network setup quick and easy.

- Bulk Configurator
- Template option
- Firewall/Outbound Policy
- Captive Portal
- SpeedFusion



Real-Time Monitoring

InControl 2's suite of Reporting options give you the tools you need to know what's going on in your network.

- Bandwidth usage
- Client Usage
- Real-Time and Historical
- See all Devices in easy to read dashboard

Plus a lot more!

- Firmware **Management**
- Warranty **Monitoring** and renewal
- Configurable and Granular **email alert/notifications**
- Ad Delivery Server
- Get information from Smart Device **Companion App**

InControl 2

Companion App

Monitor and manage your Peplink / Pepwave network from anywhere with the **InControl mobile app**. Anywhere you go, you can now check the health of your entire network on your mobile device.

- Save your most commonly accessed groups across all organizations on the **favorite screen**.
- **Check the connection status** of any device, the **clients** they are connected to, and **all activity** affecting the group.
- **Remote Web Admin** to directly access the UI of your Peplink unit
- **iOS ver available** currently, Android ver available soon



Stay **Connected** & Up-to-Date



Social Media

Stay up to date on the latest offerings from Peplink on all the major Social Media channels.

Community Forum

Our Forum (forum.peplink.com) truly keeps you connected to all the latest from Peplink directly.

In addition, the forum is a direct channel to our Teams for questions, help, etc.



